



San Diego Woodturners

Proud Founders of the Turn-Around-for-Vets (TAV) Program



Volume 2023 Number 07

July 2023

9984 Scripps Ranch Blvd #198, San Diego, CA 92131

www.sdwat.org



This month at SDWT: @ Nottingham

15 July, 2023, (9 AM – 4 PM)

Janice Levi

“Ornament Turning & Pyrography Techniques”

Paid Demo

\$25 In-Person (Lunch Included)

\$20 ZOOM (Register on-Line “Members Only Area”)

Contents:

<i>Shavings...from the Prez</i>	2	<i>Membership Form</i>	15 (AAW)	25
<i>Program of Events</i>	4	<i>From the Webmaster</i>	16	<i>Rockler Coupon</i> 27
<i>Special Article</i>	6	<i>Wood Resources</i>	17	<i>Board/Committee</i>
<i>Drop-In Sat</i>	11	<i>DVD/Book Info</i>	19	<i>Members</i> 28
<i>TAV Update</i>	12	<i>Mentor's</i>	20	<i>Cut-offs</i> 29
<i>Member “Chips”</i>	14	<i>June Instant Gallery</i>	21	



Dave John

SHAVINGS

from the Prez . . .

As I am putting some notes together today (3 July) for this month's Shavings, I pause for a moment, as we all celebrate the 4th of July. It's a day for BBQ and get togethers with family and friends. It is also a time to reflect on the positive for what this Country stands for and to acknowledge the members of our armed forces who have enabled us to be a beacon of freedom and democracy for the world. Without the brave service of all our service members from all branches, our Nation would not stand as strongly and safely as it does today. Happy 4th of July to all in SDWT.

Lets start out by giving an SDWT **Thank You** to Sally Ault for last months demo on turning a baby rattle. A heirloom project that surely is to be a treasured item for that special new member and to any family. Also a demonstration to refresh your technique on spindle turning that Sally provided. Hope you give this project a try and do share your turning at one of the next Instant Gallery displays.

The Fair is almost completed and Jon Chernow, Steve Frick, and myself, will be closing out the 4th of July at our Booth. Steve will have a wrap-up of this years Fair donations at our next meeting. Overall I would say that this years efforts were a success and achieved at least that \$1 dollar more then last year in donations. More importantly, another opportunity to share with the Public our passion for woodturning and what San Diego Woodturners is about. **Thanks** to Steve and Jon for their efforts and time coordinating all the tasks required. SALUTE!. Also to all the members of SDWT who prepared tops and pens and participated at our woodturning booth at the Fair. **Thank You!!** We have almost depleted our stock of pens and tops that we will need to replenish for next year. But more on that later. Also, if you have suggestions for next years effort for improvement, let Steve or Jon know. Lastly, **Congratulations** again to all the members of the club who submitted turnings displayed in the Design In Wood display. Some mighty fine work and artistic turnings that reflect not only you as woodturners but the talents within San Diego Woodturners. For everyone, consider an item for display at next years Design In Wood and share in your talent and skill.

(Continued next page)

Special Article: Introduced within last months June newsletter “*Think of your Lathe as a Catapult*”: Patti Brown returns with a second article on “*What is the Best Turning Speed*”. Brian Saunders spoke to this from a safety standpoint at last month’s demonstration. Patti however, gives you the details to expand your woodturning knowledge (See page 5). Good to know information

Looking Ahead

This months Demonstration: SDWT hosts Janice Levi who will be demonstrating on how to turn a Christmas Ornament and share her skills with pyrography embellishment. See page 4 for details. There will also be classes on same following on Sunday and Monday. Sunday is turning the ornament w/finial and stand. Monday is focused on pyrography techniques. **Class seats are available** and one can sign-up by going to our Members Only page and at the Top click on the appropriate link to sign up. If you want to improve your spindle turning technique and develop some skill with pyrography this is a demonstration and classes not to miss out on. This should be a great demonstration and I am looking forward to the live demonstration.

This is also a paid demonstration event (**\$25** for in-person (includes Lunch) and **\$20** for ZOOM link. The registration for the ZOOM demonstration can be found at the top of the page within the Members Only Page. Those attending for the live demonstration, please bring exact amount.

New Item brought to my Attention: SDWT in years past displayed and sold turned items at the Gallery 21 during the Holiday period within Spanish Village of Balboa Park. SDWT has been extended an invite for exclusive use of the Gallery and for its members for One Week (28 Nov - 4 Dec (includes Fri/Sat “December Nights event)). A commitment has not been made yet but depends on member interest and your Board Members review & commitment approval. I will provide additional details at our July General Meeting (Business portion) and solicit your thoughts in order for the Board members and myself to gauge if SDWT should pursue or not pursue. A response is due back to the Gallery 21 manager by the first week in Aug. A few details to ponder:

- Hours are 11– 4 each day, Fri/Sat-extended hours to late evening. Members selling items will be asked to participate at the Gallery (Times TBD).

- Sale of an item: a Gallery 20% surcharge is levied and CA sales tax is to be charged on each item.

- Use of the Gallery cost to SDWT for the week is \$212 and may become a shared cost with sellers

- No set limit on items for display by an individual member (but subject to Board review)

- Items must be wood turned items.


- An event coordinator is required.

Lastly:

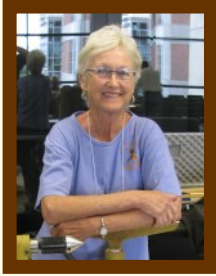
Brought to my attention, one of our long time members of SDWT passed away April 27th, 2023, **Mr Thomas Stahl**. A member who enjoyed many activities to include woodturning. Again our thoughts and prayers to the Stahl family and a member of SDWT.

Stay safe and have fun.

“Making Better Turners Together”

Dave John 

SDWT Demonstration/Event Schedule for 2022



I hope you are all staying well. We are blessed to have such a wonderful pastime to keep us busy.

Our program schedule will continue to provide a variety of demonstrations to enhance your skills and maybe offer something you haven't tried before..

Sally

P.S.: On the Horizon: **Aug: Larry Szafraniec, Sept: Rebecca DeGroot**



Janice Levi is a retired drama teacher and alternative school counselor living in Central Texas. She has been turning wood for 19 years and has presented at both regional and national symposia as well as clubs across the nation. Levi is known for her purses and jewelry but also enjoys turning **heirloom ornaments**, many of which are enhanced with pyrography and color. She also frequently writes for several woodturning magazines. Janice's work below:

Janice will be demonstrating turning an ornament w/finial. In addition, demonstrating pyrography embellishment technique.

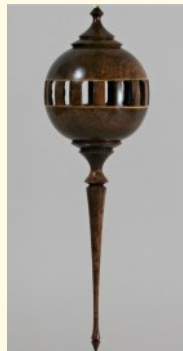
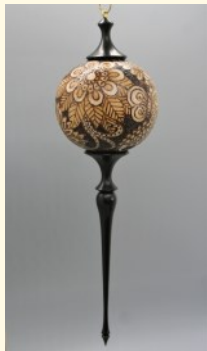
If this strikes your interest, two classes will follow her demonstration and you can sign up by going to our members only area of our SDWT website. You will find two options for the classes at the top of the page::

Option 1: Ornament with Finial class (\$100) on 16 July.

Option 2: Pyrography Class (\$100) on 17 July

Or Sign up for both. Class Seats for both classes are available.

Remember, Christmas is just around the corner and what better time to learn how to turn an ornament or celebrate "Christmas in July". This is a great opportunity to learn the process and technique of turning a Christmas Ornament.

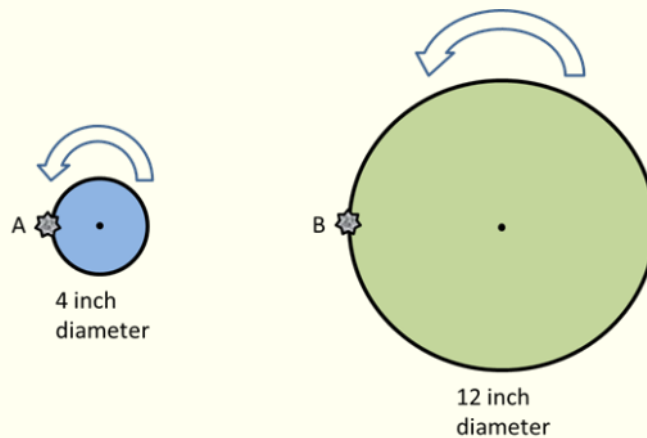


What is the Best Turning Speed by Patti Brown

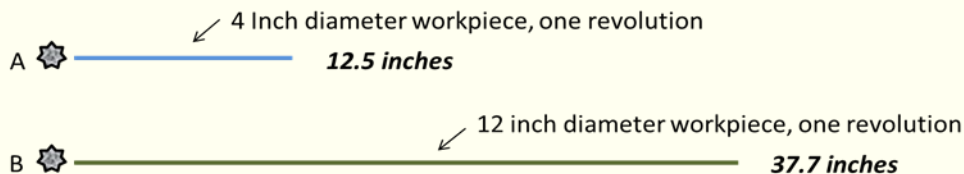
Woodturning is fun, but it comes with some risk.

You are responsible for your own personal safety.

Determining how fast we should run our lathes is one of the most fundamental choices we make as turners. First let's start by defining "Speed" and "RPM". Speed is the distance covered per unit of time. For example, 5 miles per hour (5 Mph). RPM is an abbreviation for Revolutions per Minute and is used when discussing an object's rotation about an axis. An object rotating at 100 RPM completes 100 rotations about its axis within one minute. Spoiler alert: RPM is not the speed of a piece of wood spinning on a lathe, but it is intimately related. Read on to find out why. So, how fast should your lathe be going? Good question. Let's begin by looking at the diameter of a work piece. Why is diameter an important consideration? Because it directly impacts the speed of a work piece. Consider the two circles in the figure below. The circles represent work pieces on a lathe. One work piece is 4 inches in diameter while the other is 12 inches. Note that each work piece in this figure has a point on its perimeter represented by a star and the letter "A" or "B". If each work piece completes one revolution about its center point, how far does each point ("A", "B") travel?



In the figure below the lines represent the distance each point will travel as it completes one revolution. The line for point "B" (corresponding to the 12 inch diameter work piece) is 3 times longer than the line representing for point "A" (the 4 inch work piece).

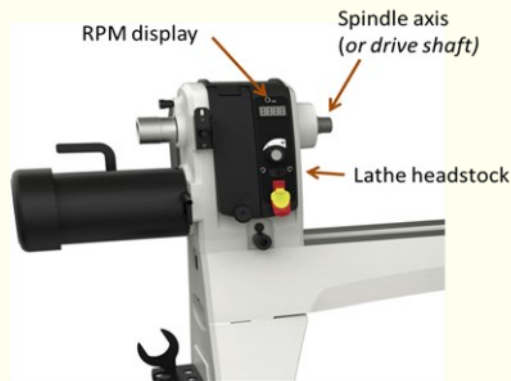


Distance traveled = Diameter x π = Circumference of a circle $\pi = 3.14$ (this symbol is called "Pi") So far so good. Points on the perimeter of a larger diameter work piece travel further than a smaller work piece. But, what about speed?

What is the Best Turning Speed by Patti Brown

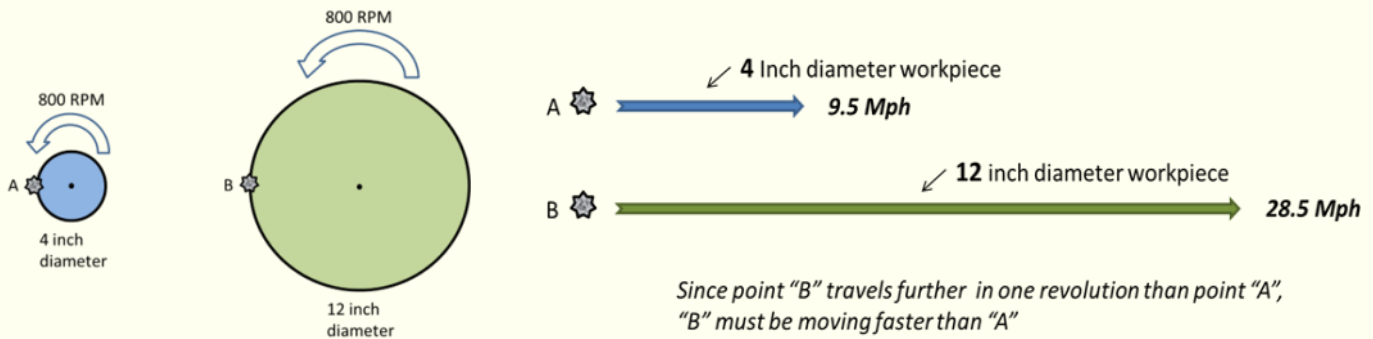
Speed relates to RPM (revolutions per minute) but is NOT RPM. When we set the RPM value on our lathes, we are setting the rate of rotation of the drive spindle. The figure below shows the headstock area of a lathe. The spindle axis (or drive shaft) is where we mount our work piece to the lathe using a chuck, faceplate or spur drive. The RPM display shows how fast the spindle axis is rotating, not how fast a work piece is moving.

What is "Speed"? Speed is represented as a distance traveled in a unit of time such as Miles Per Hour. As we previously determined, the distance traveled in a given time (or "Speed") depends on the diameter of the work piece.



Let's look back to the figure with the circles representing work pieces of different diameter. If each work piece is rotating at 800 RPM, how fast are points "A" and "B" traveling? We know point "B" travels further than "A" in one revolution, so if both work pieces are rotating at the same rate (800 RPM), "B" must be going faster than "A". Point "B" travels further than "A" in the same amount of time, therefore the speed of point "B" is greater than that of point "A".

This concept is illustrated in the following figures:



To see how I calculated the speed in miles per hour, see the appendix 1 at the end of this article.

We now have some important conclusions. Not only does point "B" travel further in one revolution than

"A", it's also traveling faster. The reason for both of these conclusions is that the work pieces are of different diameter. The larger the diameter, the faster points on its perimeter travel at a given RPM.

What is the Best Turning Speed by Patti Brown

.RPM is not the speed of a work piece. RPM is used to control the speed of a work piece

RPM and diameter together determine the speed of a work piece.

Make sure you understand these conclusions.

We now have some important conclusions. Not only does point "B" travel further in one revolution than "A", it's also traveling faster

As turners, we use lathe RPM as a proxy for turning speed and set the RPM for our project. To set the correct RPM, the diameter of a work piece must be taken into account.

So, once again, how fast should we turn?

Here are two simple "speed" equations used by many woodturners. For a given diameter work piece

the equations produce an acceptable (relatively safe) range for RPM; a lower RPM and upper RPM.

Exceptions to the equations exist and will be discussed shortly.

Lower RPM = 6000 / work piece diameter (in inches)

This is 6000 divided by the diameter of the work piece in inches. Yes, this is math but don't complain.

Use the calculator on your smart phone or computer. Don't be lazy, do it.

Upper RPM = 9000 / work piece diameter (in inches)

Now, let's try this out. What is the safe RPM range for a 4 inch diameter work piece?

Lower RPM = $6000 / 4 = 1,500$

Upper RPM = $9000 / 4 = 2,250$

For the 12 inch diameter work piece the RPM range is:

Lower RPM = $6000 / 12 = 500$

Upper RPM = $9000 / 12 = 750$

Turning speed exceptions and precautions ("speed bumps")

Just like when we reduce our driving speed when it's raining, conditions exist when we should reduce our turning speeds. When I write "exception" I mean, slow down, reduce the RPM of your lathe below the range suggested by the equations.

Here are some basic precautions and a few of the factors that lead to exceptions to the RPM equations listed earlier.

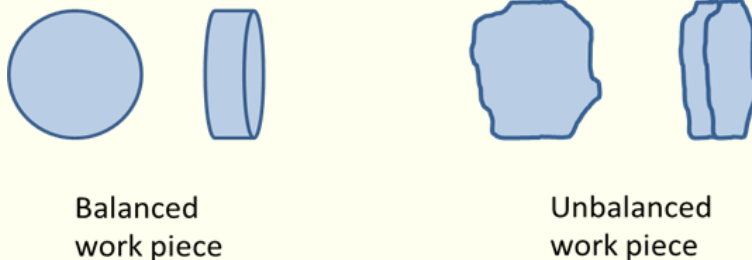
Exceptions and Precautions

For larger work pieces (9 inches in diameter and greater) never exceed 1,000 RPM -
This is a general rule of thumb.

What is the Best Turning Speed by Patti Brown

More experienced turners might chafe with this restriction, but it's generally a good rule of thumb, especially when roughing a work piece. Smaller diameter (less than 9 inches) pieces can be turned safely with higher RPM values (per the equations). Brian Saunders adds "Spindle work, especially small stuff like pen, bottle stoppers, tops, etc may be turned safely at much higher RPMs. A half inch pen may be safely turned at 4000 RPM. Other small objects with small mass may also be safely turned at 3500 - 4000 RPM."

□ Slow down if your work piece is irregularly shaped or out of balance (see the figure below showing a perfectly cylindrical turning blank and a lumpy looking one which is considered "out of balance"). Reduce the RPM level (by about 200 to 300 RPM) when initially shaping the work piece. Once the piece has been brought into balance you can increase the RPM to be within the recommend range. Use the tailstock to help secure the unbalanced work piece while you rough turn it into shape.



□ Slow down if the work piece has condition issues; punky, shows small cracks, has visible voids

(or you suspect interior voids). If the work piece is in poor condition, consider not turning it.

The attachment method (tenon used for a chuck for example) can fail causing your work piece to become a projectile (very dangerous). At a minimum be sure to reduce the RPM and be sure to stay out of the line of fire (which you should do any time turning). And use your tailstock. In my opinion using products to improve or stabilize dubious wood can improve the surface of the wood making it easier to turn but, these products do not repair structural issues deep within the wood.

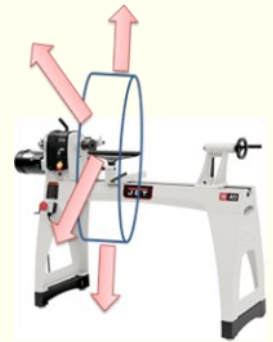
□ Slow down if your lathe is wobbling and vibrating. First, turn your lathe off and determine the source of the vibration and resolve it. Maybe the weight of the piece is not balanced (uneven moisture or has a large internal void) which caused your lathe to vibrate and wobble. You do not want your lathe dancing around while you are turning (despite what you see on Youtube!).

What is the Best Turning Speed by Patti Brown

It's very dangerous. ... reduce the RPM until the wobbling and vibrating goes away. And use

your tailstock.

- Precaution: **Stay out of the line of fire** to avoid being hit by flying debris and / or chunks of wood. The figure depicts the "line of fire" (or the "ring of fire").
- Precaution: The thickness of a work piece does not factor into determining the correct RPM.



(thickness relates to how tall/deep a bowl or vessel can be). However, if your work piece is heavy (above about 15 - 20 pounds) you should reduce your turning speed. Heavier work pieces can be more challenging to safely mount to your lathe and to control.

- Precaution: Turning too slowly (too low of an RPM setting) can be dangerous since turners tend to compensate by pushing tools too forcefully into the wood in an attempt to remove wood more rapidly. Applying a downward force to the tool to insure it is firmly against the tool rest is good practice, but pushing tools too aggressively into a work piece can cause accidents is not recommended.
- Precaution: Before you plug your lathe in, make sure it is turned off and the variable speed dial is set to zero. Plugging in a "live" lathe can be very dangerous.
- Precaution: For those that have lathes that offer different RPM ranges by reconfiguring the drive pulleys, make sure the pulley/belt system is set to the correct position for the RPM range desired. For example, If you have been turning pens using the high end range of RPM and now want to turn a large diameter platter you should reposition the belt to the lower end range of RPM for the patter. See appendix 2 for more information on RPM and drive pulleys.
- Precaution: It's a good idea to use the tailstock on your lathe whenever possible, particularly when you are roughing out a work piece. If your lathe does not have an RPM display, consider purchasing (on Amazon etc. starting at about \$20) a handheld tachometer or installing an RPM reader with display on your lathe. Setting the correct RPM for your turning project is very important for safety reasons. People get hurt (and worse) every year while woodturning.

Thanks and acknowledgment:

Sally Ault ... suggested this article

Brian Saunders ... significant collaboration and review

Bill Matthews ... review

What is the Best Turning Speed by Patti Brown

Appendix 1: Miles per hour (Mph)

How to calculate miles per hour (Mph) using RPM and the diameter of a work piece.

First calculate the angular velocity (ω)

Note: A radian is a unit of angle and is the standard unit of angular measure in many areas of mathematics. 2π radians is equivalent to 360 degrees.

$\pi = 3.14$ (this symbol is called "Pi")

ω (radians/second) = RPM (rotations/minute) x 2π (radians/rotation) x (1/60) (minute/seconds)

Next, calculate Mph

Speed (Mph) = ω (radians/second) x Diameter (inches) x (1/2) x 3600 (seconds/hour) x (1/63360) (miles/inches)

Example - Calculating Mph for the 12 inch diameter work piece

ω (radians/second) = 800 (rotations/minute) x 2π (radians/rotation) x (1/60) (minute/seconds)

The angular velocity $\omega = 83.7$ radians/second

Speed (Mph) = 83.7 (radians/sec) x 12 (inches) x (1/2) x 3600 (seconds/hour) x (1/63360) (miles/inches)

Speed = 28.5 Mph

Appendix 2: A note on Torque, RPM and pulleys

Many lathes use pulleys of different diameter to offer different ranges of torque (see the definition of torque below). The bigger your driven pulley (vs the driver), the slower it will turn but the more torque it will produce. The smaller your driven pulley (vs the driver), the faster it will turn but the less torque it will produce. More torque can be useful if the work piece you are turning tends to stall your lathe. In addition to a different range of torque, the pulley configurations offer different ranges for RPM.

On my lathe, regardless of how I set up the pulleys, the RPM value displayed is accurate. This is because the sensor that measures RPM is on the spindle axis. Most modern lathes have this feature as well.

What is torque? Torque is a measure of the force that can cause an object to rotate about an axis.

Wikipedia states: "In physics and mechanics, torque is the rotational analogue of linear force."

“Drop-In Saturday”



Come join your Drop-In Mentors to help with your turning question(s). We will resume 22 July at Nottingham. Mentor's (L to R) **Pete Campbell, Steve Frick, Chad LaVoi, and Carolyn Jones**).

The idea behind “Drop in Sessions” is to set up a shop environment of collaboration and a place to receive assistance in answering your turning questions or help with a technique.

Bring your own tools and project material along with your PPE.

Our days are typically on a select **Saturday of the Month. 8:30 am to 12:00 pm**

San Marcos, Nottingham Arts Center.

(“Drop-In” resumes July 22nd, 2023)

Participants must be members of San Diego Woodturners Club (SDWT) in good standing. Members under the age of 18 years may participate with parental permission and a parent or guardian must be present.

Safety is ALWAYS a Priority!

Turn Around for Veterans (TAV)



Turn Around for Vets (TAV) is a critical program of the San Diego Woodturners Club. All TAV activities are carried out by a dedicated, unpaid group of volunteers so that 100% of donated funds, designated for TAV, are used to purchase supplies and equipment and to support the program.



Paul Simpson

The month of June and early July are always a busy time for SDWT and TAV. We continue to teach at all three sites and also volunteer to man the club booth at the Del Mar Fair. The Fair provides the best opportunity each year to demonstrate and discuss our woodworking hobby with the public and to raise donations that support the club and TAV. In preparation for the Fair, TAV manages the preparation of finished pens and supplies the pen blanks and pen kits required for the demonstrations. This year we started the Fair with over 400 finished pens. I don't have an exact count of the number of pens that have been passed on to the public but they are definitely a "hot item". Many people return to our booth each year to maintain their stock of nice presents for holidays, special occasions and for their own use.

PEN TURNERS NEEDED!

After the Fair is closed, I will have some pens left over but our TAV supply will be very depleted. TAV will supply pen kits and blanks to members who are willing to turn them for future events. A few individuals are prolific contributors throughout the year but everyone is welcome to help out. Pens are the first project we use to introduce wounded warriors and veterans to woodturning because they are easy to make with a little instruction from one of our volunteers. After about 1 hour the new participant has a useable project and has already learned some basic safety rules and spindle turning techniques. Regardless of your skill level, every member of SDWT is capable of turning the occasional pen. They don't have to be fancy. In fact, the majority of pens we offer for donations are Slimline with fairly straight features. So, I invite everyone to support our efforts to maintain a large supply of finished pens. I will have some samples and supplies at each club meeting so come and talk with me.

The Fair always provides lots of opportunities to promote TAV. Many people ask for information on joining our club. Here a few examples of special conversations:

An 86 year old man told Jon Chernow he would like to donate some wood from an old sailing ship that is about 175 years old. Jon followed him to his car and gratefully took position of the wood. The donor prefers to remain anonymous.

A woman who learned woodturning from Sally Ault and Tom Edwards several years ago at NMC showed me pictures of many pens she has made over the years.

Turn Around for Veterans (TAV)



Her family recently gave her a new lathe. She needs some refresher instruction on bowl turning. She is interested in joining SDWT.

Mike Tompkins has developed a very entertaining method for asking people to help him turn tops. He tells them tops don't work right unless they are colored. He has a large plastic bag with many different colored pens, including multiple shades of primary colors. He asks multiple children to pick out their favorite colors, and then turns tops for each of them. I have watched him entertain groups of ten or more. Needless to say, the new tops almost always go home with the people who have helped him.

I was turning pens at the lathe beside Mike when he had a large group watching him turn pens. A couple of the fathers were standing off to the side so I asked them if they would like to see how a pen is made, while they were waiting for the tops to be completed. Before long I had their wives watching what I was doing and explaining. Several pens also left with the group.

Bottom line here is that we have a lot of fun working at the Fair and our shifts tend to go very smoothly.

In last month's newsletter I mentioned that two recent graduates of the Aspire Care Center were presented with donated lathes so they could continue their woodturning hobbies. Both are staying in the San Diego area. TAV is providing them with one year SDWT memberships. Here are our two new members:



Ben Robinson



Alan Middleton

I am continually looking for more TAV volunteers and asking for donations of turned items. Once again the Torrey Pines Gift Shop is in dire need of items made from Torrey Pine.

Happy July 4th and thank you for your continued support of TAV.

Paul



Member-"Chips"

Hello San Diego Woodturners

Total membership count for the beginning of the month of July 2023 is 201.

This month is a Paid Demo for In-Person and ZOOM participants. For In-Person attendees, pls bring the exact amount (\$25) in order to quickly process you in and give you your lunch tag.

ZOOM participants can register via our Members Only Site tab and click on the registration Tab (\$20) at the top of the page.

If you're already a member of AAW Great! If not, consider joining AAW, if you think our resources are great, you will no doubt benefit from their pool of knowledge. Check them out at

www.woodturner.org

Remember that as a paid member, you have access to the [SDWT Members facebook group](#) I hope you decide to join the group, it's a very simple way of interacting with other members of the club.

If you have any questions or you think you might be missing club emails. Let us know either in [SDWT Members](#) or info@sdwt.org

Thank you,

Esther Assemat or Motoko Smith (Membership Committee)

Questions: Contact either of us at Membership@sdwt.org



San Diego
Woodturners

A chapter of the American Association of Wood Turners



Membership Form

SDWT membership is \$50.00 per calendar year. To become a member, complete this form and send a check to SDWT. Send to the address below or bring it to any SDWT meeting, go to (www.sdwt.org) for our meeting time and location. If you have any questions, please contact us at (info@sdwt.org)

Date _____

Name _____

Address _____

City _____ State _____ Zip _____

Phone # _____

Email _____

Our membership allows our club to hold monthly meetings, enjoy refreshments, watch expert demonstrations and participate in classes. As a member, you will have access to woodturning supplies, video library, wood resources and mentorship.

Check out our website at www.sdwt.org

San Diego Woodturners
9984 Scripps Ranch Blvd. #198
San Diego, Ca. 92131

From the SDWT WEBMASTER

If you are short of time or looking for specific information, be sure to check out the "Timestamps" in the description area of all Zoom meeting videos. They allow you to quickly click and jump to the specific topics.: Plate

You will find all of this on the password required "[Members Only](#)" webpage under "Zoom Recordings" Latest Recordings as follows:

Sally Ault: Baby Rattels

Tom Edwards: Finishing for Woodturners

Paul Russell (Paid Demo-Access Code Required)

Carolyn Jones and Nahshon Stark (Bowl Turning/Laser Embellishment)

Jeff Neff: Emerging Bowl(s)

Joe Fleming: Turning a Name Badge Holder

Stuart Batty

Karen Freitas: Turning Trees

Don Owen: Plates

Matt Monaco

Mike Jackofsky: Hollow Forms

Dave John: Trembleurs

Jeff Neff: Half Bowl

Todd Raines: Oval Box





As members of the San Diego Woodturners, you may come across an opportunity for us to add to our wood inventory and made available to our membership at nominal cost.

If you hear of anyone needing to move wood off their property please give me a call **Chad LaVoi** (see members only tab (membership directory for contact info or send an email to GotWood@sdwt.org) .



I will be at the Wood Lot the 15th July to assist with your selection of wood resource for your next project. Thanks again to those members who help with Wood Resources.

Chad



Beehive
Wood Stacking

Raffle



Our **July** raffle will have some great raffle items **Thank You** to all the members who participate in the monthly raffle. The raffle program is **self-supporting** with your support and ALL of the proceeds from the raffle are reinvested in future raffles and never used for any other purpose.

If you would like to see some particular item(s) included in the raffle program, let me know and I will see if I can work them in.

Be safe.

Jeff - Raffle Committee Chair.

From the DVD & Book Library

Hi All

Check out the listing on the SDWT web page of our vast DVD and Book library on various woodturning topics, techniques, and artistry. DVDs and Books will be available at our July meeting for checkout and return.

Until then,

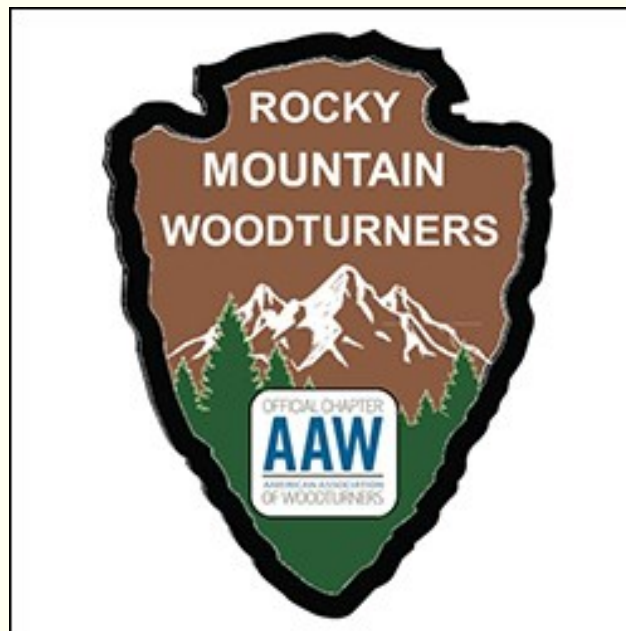
Carolyn Be Safe.



Woodturning Symposium Announcements



SWATURNERS.ORG



Rocky Mountain Woodturning Symposium

September 15-17, 2023

The Ranch / Larimer County Fair Grounds, Loveland, CO

rmwoodturningsymposium.com

Mentoring Program

Our mentoring program is one of the unique benefits of our club. Our mentors can help with basic to complex turning and teach safety along the way. This is a great way to start out or hone your skills with complex tasks taught by turners skilled in specific areas of turning. Our mentors are volunteers and are dedicated to sharing information on all facets of woodturning.

Rest assured however, that all of our mentors are easy to work with. Most often the mentor opens his/her shop to the applicant at a mutually agreed upon time and schedule.

A list of mentors and their specialties are listed within our Mentor Tab of our SDWT.org website (**go to About tab and pull down menu, go then to Mentors**). Phone numbers for the Mentor you have particular area of interest is listed in the (members only area of the web site).. Upon making contact, arrange a time and place. If you have any questions, email me at the below address..



Jeff Neff – Mentor Committee Chairman (MentorChairman@sdwt.org)

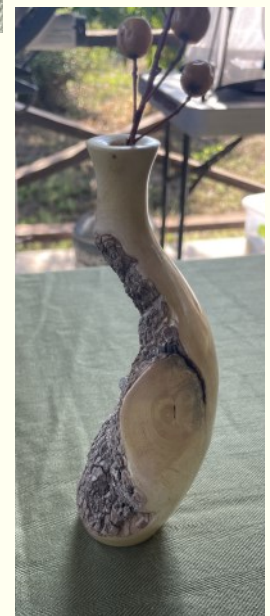
“Mentors do not give you a shortcut, but they streamline the process. They invariably had their own great mentors, giving them a richer and deeper knowledge of their field. Their ensuing years of experience taught them invaluable lessons and strategies for learning. Their knowledge and experience becomes yours; they can direct you from unnecessary side paths or errors. They observe you at work and provide real-time feedback, making your practice more time efficient. Their advice is tailored to your circumstances and your needs. Working closely with them, you absorb the essence of their creative spirit, which you can now adapt in your own way.” From the Book - *Mastery* by Robert Greene



June Instant Gallery Items



June Instant Gallery Items



June Instant Gallery Items



Resources

Tropical Exotic Hardwoods

2270 Camino Vida Roble site "B"
Carlsbad, CA 92008 (760-434-3030)

North County Tools

955-A Rancheros Drive
San Marcos, CA 92069 (760-743-2004)

Enviro-Safety Products (No discount)

516 E. Modoc Ave.
Visalia, CA 93292—7630
(800) 637-6606

Rockler

8199 Claremont Mesa Blvd
San Diego, CA 92111 (858 268-1005)

The Hardwood & Hardware Co

8849 Complex Dr
San Diego, CA 92126
(858 - 536-1800)

Woodworker West

PO Box 452058
Los Angeles, CA 90045
(310) 216 - 9265

Tool Depot

3464 Pickett St
San Diego, CA (619) 220 - 7111
1655 Broadway #13
Chula Vista, CA (619) 585-800

SD Urban Timber

922 Industrial Blvd
Chula Vista, CA 91911
619-20 7-4084 (sdurbantimber.com)

American Furniture Design

Ben Matte Tung Oil can be purchased here

2243 Mountain View Dr.
Escondido, CA
(760) 743-6923

Bennett Crone Lumber and Plywood, Inc.

1202 Piper Ranch Rd
San Diego, CA 92154
619-661-0667
(Bennetcrone.com)



Pete Campbell is still collecting Weed Pots (WP). As shown in the picture left, our recent groupment of WP going to Lumbercycle (501 (3) ©). Tom Hamilton has been very appreciative of our continued support and he extends a big **Thank You** to all that have contributed.

Keep those WP's coming.

AAW Virtual Demonstration's

AAW posts on their website for members (www.woodturner.org) via the "Watch Live Demonstrations Online: via **AAW's remote demonstration (IRD's) eEvent calendar Tab**: Here's a listing for quick reference of the forthcoming Line-up: (Fee typically required and sign-up required):

AAW Remote Demonstrations: (Registration Required)

Continue to check the AAW site "Virtual Remote Events Tab" for updates on, IRD's

Other sites to check-out:

- Virtual Woodturning Demo's with Trent Bosch. Ck his site at virtualwoodturningdemos.com
- Cindy Drozda has various IRD's. Check her site at cindydrozda.com. Her most recent IRD on brass threaded inserts. Part II-End of July

-San Diego Fine Woodworkers (SDFWA.org) provides various on-line demo's. Ck them out as well as you view other items that may be of interest.

- CRAFTSUPPLYUSA.com continues the beginning woodturning series by Kirk Deheer. Go to YOUTUBE craftsupplyusa. Tap on the "woodturning 101 video series". Other demo's to see as well on the site Most recent video "Turning a Utility Box.



AAW International Symposium

May 23-26, 2024

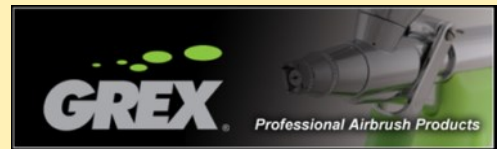
Portland Oregon



11717 Caminito Vantana • San Diego, CA 92131
858-395-0562 • airbrushingwood.com

Joe carries the full line of Grex Professional airbrush products including:

Airbrushes - Tritium pistol grip and Genesis XGi pencil grip
Compressors
Accessories
Private Stock acrylic paint



Joe carries all Grex Air Tools, featuring:

AOS 368 Random Orbital Sander
AG 368 Angle Grinder and Carving Tool



Learn more about the above products and see Joe's Gallery at Airbrushingwood.com. (highly recommended) along with his educational material on color/airbrushing and much more.
Good Stuff!!

All club members will receive show discounting pricing on all products and an extra 5% on airbrush starter kits.



The San Diego Rockler Store,
 is offering the San Diego Woodturners this exclusive discount coupon.
 Valid only at the San Diego location on Claremont Mesa Blvd, this coupon gives
 each SDWT member 20% off one item (with exclusions as noted).

The coupon (shown below) is valid for one use only per members HOUSEHOLD and
 the member must show their current SDWT membership card.

**** 20% OFF ****

ONE ITEM

SAN DIEGO WOODTURNER Member



Coupon Required for Discount, No Exceptions

EXPIRES 07/16/2023

Coupon may be used ONCE! Does not apply to previous purchases. Power tools excluded. Sale items excluded. Discounts may not be combined. Discount Restricted Items Excluded. Sale prices can not be adjusted to use coupon .(Showing current year SDWT Membership Card required). When in doubt, ask inquire with the Manager).

*******Coupon WILL NOT be Honored past the Expiration date*******

*******ONE COUPON PER MEMBER HOUSEHOLD ONLY*******

2023 SDWT Board Members and Committees

SDWT BOARD MEMBERS

President

Dave John pres@sdwt.org

Vice President

Sally Ault vp@sdwt.org

Secretary

Jennifer Jones

secretary@sdwt.org

Treasurer

Geri Gabriel treasurer@sdwt.org

Norm Burkhart (Incumbent)

Members at Large

Paul Simpson, Jeff Neff

Chad LaVoi, Terry Sullivan

Jon Chernow, Roy Ulrich

Ernesto Aquino, Andy Boyer

Steve Frick, Carolyn Jones

Motoko Smith

Contact Information for Club Officers, Board and Committee members is available on the SDWT.org website within the Members Only Area. (Membership Directory) and above email addresses.



COMMITTEES

Newsletter

Dave John NewsletterEditor@sdwt.org

Audio/Visual

Andy Boyer, Hal Gorss, Jerry Aarestad

Raffle/Mentors

Jeff Neff MentorChairman@sdwt.org

Del Mar Fair

Steve Frick, Jon Chernow

Programs/Classes

Sally Ault ProgramChair@sdwt.org

Membership

Esther Assesmat & Motoko Smith membership@sdwt.org

Wood Resources

Chad LaVoi (GotWood@sdwt.org) ,

Refreshments

Steve Frick

Instant Gallery

Ernesto Aquino

Host Facility

Terry Sullivan

TAV

Paul Simpson TAVChair@sdwt.org

Site Leads: NMC: Howard Katz, Aspire Brian Saunders

WWBN CPEN: Jon Chernow / Dan Lyle

Sunshine Committee

Mavis Porter

Webmaster

Roy Ulrich webmaster@sdwt.org

By Laws

Don Wolfe, Jon Chernow

AAW Liaison

Chad LoVoi

The Last Page - "Cutoffs"

(Odds and Ends)

Beware of a new Amazon scam. My husband ordered me some expensive jewelry, but motorcycle parts came instead. Thankfully they fit his bike...

On our way to church, we asked our grandchild why is it important to be quiet in church. She said "Because there are people sleeping!"



My kids and grandkids keep laughing about me losing my memory. They won't be laughing at Christmas when there's no eggs under the tree!

NOTTINGHAM ACCESS

For access to the Nottingham Arts Center contact Terry Sullivan via e-mail (go2tms2@gmail.com). A voice message may additionally be left at the number listed in the member directory. Include the day and time you wish to arrive as well as the purpose of your visit. You must have approval from Terry or his representative for access to the facility.

Do not enter the Nottingham facility or grounds without prior approval or without the project leader present.

San Diego Woodturners (SDWT)

A Nonprofit Corporation

A Chapter of the AAW

9984 Scripps Ranch Blvd #198

San Diego, CA 92131



Next Event

July 15th, 2023

Janice Levi

In-Person & ZOOM

Paid Demo (\$25 In-Person (Lunch Included)

\$20 ZOOM (Register on-Line "Members Only Area)

9 AM until 4 PM