



# San Diego Woodturners

Proud Founders of the Turn-Around-for-Vets (TAV) Program



Volume 2020 Number 02

February 2020

9984 Scripps Ranch Blvd #198, San Diego, CA 92131

www.sdwt.org

## This month at SDWT

February **15th** - 9 AM to 4 PM



### Barbara Dill

### Multi-Axis Turning



(All day Demo: **\$25-Members/\$35 Non-Members**)

### Contents:

|                                 |    |                                  |    |                         |    |
|---------------------------------|----|----------------------------------|----|-------------------------|----|
| <i>Shavings...from the Prez</i> | 2  | <i>Member "Chips" Info</i>       | 12 | <i>Empty Bowls 2020</i> | 23 |
| <i>Tues "Drop-In" info</i>      | 6  | <i>Membership Form</i>           | 13 | <i>Out-On-A-Limb</i>    | 24 |
| <i>Calendar of Events</i>       | 7  | <i>Del Mar Fair Info</i>         | 14 | <i>Wants/Disposal</i>   | 27 |
| <i>February Demo Info</i>       | 8  | <i>AAW</i>                       | 15 | <i>Rockler Coupon</i>   | 30 |
| <i>Workshop Info</i>            | 9  | <i>Raffle</i>                    | 16 | <i>Mentors</i>          | 31 |
| <i>TAV Update</i>               | 10 | <i>Jan Demo Summary</i>          | 18 | <i>Board/Committee</i>  |    |
|                                 |    | <i>Jan Instant Gallery Items</i> | 19 | <i>Members</i>          | 33 |
|                                 |    |                                  |    | <i>Cut-offs</i>         | 34 |



**Brian Saunders**

## **SHAVINGS**

from the Prez . . .

On Saturday, January 18, Art Majerus gave a wonderful and informative demonstration on turning plastics and acrylics. Art is a professional turner with extensive experience in turning and casting many types of plastics. Thank you for the great presentation and handout.

### **Board Elections:**

We had 5 excellent candidates running for 5 open Board spots. The field was reduced from 6 candidates to 5 when Dennis Fergusson withdrew. The election was held during our regular meeting on January 18, 2020.

Those running and unanimously elected are:

Sally Ault

Jon Chernow

Geri Gabriel, Incumbent Treasurer

Paul Simpson, Chairman of Turn Around for Vets (TAV)

Don Wolfe, Incumbent Board Secretary

I appreciate and thank all who volunteer and serve!

### **AAW**

The American Association Of Woodturners (AAW) is a wonderful organization and I encourage all SDWT members to join. There are many benefits – go to woodturner.org to see them all. And for a limited time, the AAW is offering FREE membership with access to member benefits for 3 months. At the end of three month decide that you want to continue and pay the dues (I and the AAW hope that you will!). If you choose not to join, you will be a community member, but will not have access to member benefits. This is an exciting incentive program and I hope that those of you who have not joined the AAW will take advantage of it.

Three (3) month Individual (Affiliate) membership offered for members of AAW chapters. We provide full access to all online content our publications *American Woodturner*, and Woodturning FUNDamentals as well as availability of demonstrator, maker and educator profiles on the AAW website.

### **Membership features:**

- Digital access to issues of American Woodturner and Woodturning FUNDamentals
- Full online access to all published content, current and archived
- AAW digital membership card

(continued page 3)

## (Shavings Continued)

- AAW e-newsletters: AAW Tool Box (weekly), Keep Turning with AAW (bimonthly)
- Public profile as a demonstrator plus image availability

Public profile as a maker plus image availability

### **San Diego County Fair, Design in Wood Exhibition:**

It's San Diego County Fair time soon! It's time to get prepared!

Design in Wood at the San Diego County Fair is an International Exhibition of Fine Woodworking co-sponsored by the San Diego Fine Woodworkers Association and the San Diego County Fair. Dubbed as the largest show of it's kind anywhere (according to Fine Woodworking Magazine) this exhibit highlights projects entered and judged by woodworkers from all over the world.

**The description above is not meant to scare you off! Design in Wood is a great place to enter and display your work! You may be shy or don't think that your work is worthy. But, there are many benefits to entering! First, each piece is individually judged and a written evaluation sheet is available for your review at the Design in Wood desk. This will give you valuable suggestions on improving your work. And you may win a ribbon and a monetary award! If you choose to offer your work for sale, the Fair is a great venue as hundreds of thousands of people come through the Design in Wood Show every year. Many exhibitors make significant money selling their creations, even if they do not win a ribbon.**

These are the key dates for entering your work in the Design in Wood Show:


Entry Deadline.....Friday, May 1, 2020  
Shipped entries May arrive.....Monday, May 18 – Tuesday, May 26, 2020  
Entry delivery date.....Tuesday, May 26, 2020  
Awards ceremony.....Thursday, June 4, 2020  
Fair exhibit date....Friday, June 5 – Sunday, July 5, 2020, (closed Mondays)  
Entry pick-up date.....Tuesday, July 7, 2020

To enter an item, go to the Design in Wood, San Diego Fair website and make sure that you click on 2020. Review the information on the site and follow the directions.

Important information (note the "Fine Print" on the left hand column):

The Design In Wood exhibit is open to all woodworkers, 18 and older. Work must be the creation of the artist whose name is on the entry registration. Work that is **not eligible**:

- Works previously displayed in this exhibit
- Projects made from kits or under the supervision of an instructor

(continued on page 4) 

## **(Shavings Continued)**

There is a **non-refundable** processing fee of \$25.00 for each entry.

You may enter up to 3 entries, all classes combined.

All entries will be judged using the American System of Judging. In the American Judging System, each entry is judged not only on its own merit, but in comparison to other entries in the class. In this system there is only 1 first place, 1 second place, etc.

If you would like to sell your artwork, indicate the price during the entry registration process. If you do not want to sell, mark NFS (Not For Sale) in the price field during registration, or leave the price field blank.

Listing a sale price authorizes the Fair to supply prospective buyers' contact information to you. The sales transaction is strictly between the artist and prospective buyers; the Fair has absolutely no involvement beyond giving you this information. Additional details about selling your work is in the [Design in Wood Entry Information](#).

This year there are 4 SDWT sponsored awards at Design in Wood. Each with a prize of \$125.00 and a Rosette.

Face Work – Perpendicular to the ways of the lathe.

Center Work – Parallel to the ways of the lathe.

Embellished/Mixed Media Wood Turning.

Laminated/Segmented Wood Turning.

Next year we will add a 5<sup>th</sup> SDWT sponsored award.

### **Tops and Pens, the San Diego County Fair:**

SDWT runs a booth in Design in Wood where we demonstrate turning pens and tops. These pens and tops are offered for donation and proceeds support our Turn Around for Vets (TAV) Program.

Volunteers are needed to staff the booth – **see Mark Jacobson.**

Pens and tops are needed – see Mark Jacobson for tops and Paul Simpson for pens.

**Website:** Our new website is progressing nicely and we hope to have it up and running by March 1, 2020! This is really a complex undertaking and there are bound to be a few hiccups as it rolls out. Please be patient and let us know of any issues that you see. In the end we will have a better and easier to maintain website.

Many thanks to our current webmaster, Dave Heiser, who has maintained and cared for our current website for much longer than he intended and to our new webmaster, Roy Ulrich, and web designer Pat Jones for their hard work on the new site!

(continued on page 5)

## (Shavings Continued)

### **Fraud Awareness:**

In **every** issue of “Shavings” I will remind us all to be vigilant. Criminals are assaulting us every day by phone, by email, by text message and on social media.

**It is imperative to always have a high level of suspicion concerning any request for money, gift cards, banking information, credit card information, PayPal information, crypto currency, etc.!**

### **SDWT will NEVER:**

1. Send an e-mail asking anyone to send or e-mail gift cards or crypto currency.
2. Send an e-mail asking for money, except for a course that you have signed up for and only send the money to our Club’s address (we will NEVER ask you to pay with a gift card)!
3. PayPal is used for membership dues and for the new “Donate” button on the SDWT Website.

**Always maintain a high level of suspicion on any e-mail solicitation from anyone on any of your accounts.**

**Cyber criminals are very sophisticated and even the experts can be fooled!**

**If in doubt, ALWAYS call the treasurer, president or an officer using the contact information found in the Members Only section of the website.**

### **Safety:**

As I am writing this February, 2020 Shavings article (January 29, 2020), the February issue of American Woodturner was delivered. So instead of writing about safety, this month I am going to refer you to two excellent articles in the Special Series: What Aches? Common Ailments Affecting the Woodturner.

Neck Pain by Rich Foa, a retired Neurologist: *American Woodturner*, vol 35, no. 1, February 2020, p 31-33.

The Woodturner and Neck Pain by Robin McIntyre a retired Physical Therapist: *American Woodturner*, vol 35, no. 1, February 2020, p 34 – 35.

*American Woodturner* is one of the many benefits of being a member of the American Association of Woodturners (AAW)!



Have fun while being safe!

**Brian**

# Lathe Raffle



A while back Karen Freitas entered a contest and won a Record Coronet Herald lathe worth over \$1000 for the club. The club has decided that the lathe is too big to move around for use during classes so we are going to have a drawing to allow someone to win a nice new lathe. You will be able to buy tickets for **\$10** each during the meetings in February and at the end of the March meeting we will draw a name to take it home (or we can deliver it if needed). When you buy tickets please put your name and phone number on them so you don't need to be present to win. All proceeds will benefit the club.

## Return of Tuesday “Drop-In” Classes at Nottingham

We will meet on the **1<sup>st</sup> and 3<sup>rd</sup> Tuesday** of every month **starting on March 3<sup>rd</sup> at 3:00** and we turn until approximately 7:00. This is an opportunity to work on your turning skills at any level.

You will need to bring your own wood, tools and safety gear. You can work on any safe project you choose. We will have 9 lathes and skilled mentors available. We will be working on the Delta lathes so please bring wood 8 inches or less.

This year I will try to have a mentor that is highly qualified in a special type of turning. This is not a demo, they will be there to assist in their specialty.

**March** : Roman Scheidel - offset turning, **April**: Brian Saunders - Pens, **May**: Sally Ault - Tops and Jewelry

**June**: Larry Williams - Basket Illusion, **August**: Tom Edwards - Christmas Projects

Hope to see you!

If you have any questions, please feel free to call.

**Mark Jacobson**

**858-499-5669**

# SDWT Demonstration/Event Schedule for 2020

**January 18th**



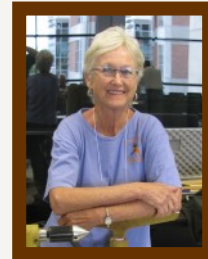
**Art Majerus**

**February 15th**



**Barbara Dill**

**March 21st**



**Sally Ault**

**April 18th**



**Doug Buddenhagen**

**May 16th**



**Dave John**

**June 20th**



**Avelino Samuel**

**July 18th**



**Picnic**

**August 15th**



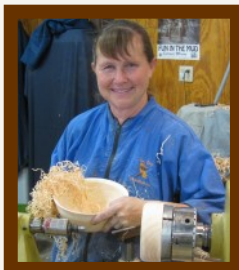
**Alex Snodgrass**

**September 19th**



**Dwight Kraich**

**October 17th**



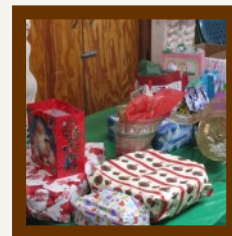
**Karen Freitas**

**November 21st**



**Gail Morrison**

**December 12th**



**Christmas Party**

(\*\* Completed Event)

## February 15th Demo Info

### *Multi-Axis Wood Turning with Barbara Dill*

*For our February 15th, 2020 meeting we are very excited to have the renowned multi-axis turner Barbara Dill!*

*Barbara will demonstrate everything you ever wanted to know about multi-axis spindles! She will discuss from start to finish the process for multi-axis design. Barbara's explanation of this mysterious process is actually understandable because of the way she teaches it.*

*Most of us have explored this area of turning by randomly changing the axes and discovering what might happen. In this demo Barbara will show you how to explore multi-axis turning in a systematic way. We will see the difference between parallel and twisted axes and the two outcomes that can occur when turning a multi axis spindle. Barbara will demonstrate how all the variables can be applied to each axis to create very different designs. Knowing this will enable you to be creative beyond your wildest dreams!*

*I have asked Barbara to bring some copies of her book to sell...it will help you remember all the intricacies of the process. **Sally***



## Coming up in March



Coming up in March is a demonstration by Sally called "Dirty Pour". Dirty Pour you ask? The picture left provides a hint of what the class is about. Hopefully to peak your interest. Besides her demo Sally will have a little bit of hands-on for those who might want to play with paint (hint hint) after the demo. More on Sally's demo and hands-on in the March NL. Mark your calendar for March 21st for a "Dirty Pour" demo with Sally.



## 2020 Workshop Information and Sign-up Update

**Workshop Sign-Up Policy:** A deposit of **\$100** is due at the time of sign-up to save you a place in the workshop. The deposit is refundable if we can fill the spot after sign-up should you have to drop out. The deposit should be sent to SDWT, 9984 Scripps Ranch Blvd #198, San Diego, CA 92131. Note name of the instructor on the check. When announced, sign-up sheets will be available at the meeting. If you are interested in signing up for any of the classes, act quickly (along with your deposit). **Questions: contact Sally Ault** at (619) 415-5308.

### Workshop Sign-ups:

Our first workshop class for 2020 is scheduled for **February 16th/17th 2020** with **Barbara Dill** (Multi-Axis Turning). **\$225. (Class is Full).**

**Joe Fleming is holding an Airbrush Workshop** at his shop Feb 22nd and 23rd. Cost \$200. Joe has the equipment if you need. 3 spots open. Email Joe at [jtfleming@san.rr.com](mailto:jtfleming@san.rr.com) if interested.

**Workshop with Avelino Samuel.** Avelino is from the Virgin Islands where he has taught IA for 21 years. A furniture maker and decorative piece turner now. He has demonstrated at various symposium to include the Utah Symposium and at AAW symposium. Sam will have a two day class following his June 20th demonstration. His work is exquisite. Details on class and cost will be announced at our next meeting. Do an internet search of (Avelino Samuel woodturner) to see some of his work.



**On the Horizon: Workshop class with Alex Snodgrass.** If you have read bandsaw articles or attended a WOOD working show, you would have likely come across Alex Snodgrass and better known as "Mr. Bandsaw" and everything you wanted to know about bandsaw's. He is also a turner and will be holding a two day class following his demonstration. Be on the look out for details at our next meeting.

### Do you shop at Amazon?



Earn cash donations for San Diego Woodturners in four easy steps by shopping at Amazon Smile:

1. Log onto [smile.amazon.com](https://smile.amazon.com)
2. Type in San Diego Woodturners Incorporated under "pick your own charitable organization"
3. Click on "Search"
4. "Select" San Diego Woodturners Incorporated to start earning 0.5% from Amazon Smile on eligible purchases for our club.

It's that EASY! There is no charge to you or SDWT and you are still eligible for your Amazon Prime perks.

Remember to shop at [smile.amazon.com](https://smile.amazon.com) to generate Amazon Smile donations for SDWT!

## Turn Around for Veterans (TAV)

Chairman: *Paul Simpson* .



TAV is a stand-alone, self-supporting, business - like activity where 100% of the funds are used to purchase supplies and equipment for our TAV program.. As always, any one can make a cash or material donation to the Club for TAV and receive a letter from our Treasurer that acknowledges the gift as a tax deductible item, if otherwise eligible under current tax laws.



### Monthly Update (Catch-up items):

This is my first input to the newsletter since taking over as TAV Chairman from Tom Lightner. It has certainly been a busy transition but we are ready to start 2020 with some great plans and opportunities for the program. Tom has been an excellent mentor and friend throughout the transition and I thank him for all he has done. Tom has volunteered to continue supporting TAV by coordinating special events and donations.

In addition to our normal weekly instruction at NMC Balboa, Camp Pendleton Wounded Warrior Battalion and the Aspire Center the TAV team has been busy with fund raising activities. On November 17 Ray Brooks coordinated participation in a holiday celebration at the Mission Trails Regional Park. Kevin and Stephen Berggren and Sally Ault joined Ray in demonstrating Top turning while Tom Lightner and Paul Simpson handled the donations table. On December 8, Ernesto Aquino and Tom Lightner set up a booth and information table at St. Paul's Episcopal Church for another successful event. Then on December 10 through 15, TAV had a demonstration booth set up at the San Diego Botanical Garden Winter Wonderland. Each night 3 volunteers entertained the crowds while turning tops, snow people and Christmas trees. These three events provided excellent opportunities to demonstrate and promote SDWT and TAV to the public. They were also a lot of fun to participate in and resulted in donations equal to approximately 10 percent of the annual TAV budget.

On December 3, Tom Lightner and Paul Simpson attended the Change of Command Ceremony for the Wounded Warrior Battalion (West). Lt. Col. K.Mary Flatley was relieved by Lt. Col. Brian P. Huysman. After the ceremony, Tom and Paul were able to socialize with the Wounded Warrior Regimental Commander and other high ranking officers and discuss the TAV program. Support for continuing TAV at Camp Pendleton was strong with everyone we talked with.

On December 4, Travis Good, the new President of San Diego Fine Woodworkers (SDFWWA), visited the Aspire Center to observe the TAV program in action and discuss continued cooperation between SDFWWA and SDWT with Brian Saunders and Paul Simpson. He is very interested in exploring additional ways the two clubs can share resources and expertise. After the meeting, he included a short article in their newsletter about SDWT and TAV which resulted in 17 members expressing an interest in woodturning.

(continued page 11)



On December 17, 2019 Ernesto Aquino brought a special guest turner to TAV at Camp Pendleton. Her name is Emily Rowley. Emily's father is a Marine deployed to Okinawa. Emily was born without any arms.

Ernesto has taught her how to turn pens using her feet, similar to the way she writes. At TAV she utilizes the lathe that is modified for wheelchair access. With encouragement from Ernesto, and everyone else in the vicinity, she turned and assembled a very nice pen in approximately an hour. Her core strength and fine motor skills are amazing; she manipulated a gouge using only two toes. She is an inspiration to everyone who had the chance to watch her work, talk with her and see her beautiful smile.



**Emily Turning at Camp Pendleton**

### **Couple of other update items:**

- The Armed Services YMCA is our sponsor at NMC Balboa. They celebrated their 100th Anniversary with a banquet on January 31. TAV was asked to prepare 250 pens for distribution to attendees at the banquet. Pens were made to support the event. Engraving of the pens were thanks to Dale Pulver.

- Speaking of pens, in preparation for the Del Mar Fair we are requesting all SDWT pen turners to consider making pens in advance. Paul Simpson will have pen kits available at all SDWT monthly meetings through May. He will collect completed pens and ensure our SDWT booth is adequately stocked. Your assistance is greatly appreciated.

It has been a busy transition period. A big Thanks to all the TAV crew members at our TAV sites.

**Paul**



# Member-"Chips"

## Hello San Diego Woodturners:

Annual membership renewal continues, if you've already renewed, thank you. If you still haven't been able to make your payment for 2020, you've still have some time before a cutoff date. Since 1 January, you'll need your new membership card to access Rockler's monthly coupon as well as all other discounts.

2020 membership cards are being distributed at our monthly meeting, remember you can mail your check, pay via Paypal on the website and also cash or check directly at the meeting.

If you're already a member, consider also joining AAW, if you think our resources are great, you will no doubt benefit from their pool of knowledge. Check them out at [www.woodturner.org](http://www.woodturner.org)

Remember that as a paid member, you have access to the [SDWT Members facebook group](#) I hope you decide to join the group, it's a very simple way of interacting with other members of the club.

If you are an existing member interested in one of the new wooden badges, the cost will be \$7 per badge and it will include your choice of either magnet or pin attachment. If you need either an extra pin or magnet, those will be \$1.

If you have any questions or you think you might be missing club emails. Let us know either in [SDWT Members](#) or [info@sdwt.org](mailto:info@sdwt.org)

\_Thank you,

**Esther Assemat (Membership Committee Chair)**

**P.S. Reminder: (Check made out to SDWT or cash for this months Demo with Barbara Dill (\$25 members/\$35 non-members).**



---

## Membership Form

SDWT membership is \$50.00 per calendar year. To become a member, complete this form and a check to SDWT. Send to the address below or bring it to any SDWT meeting, go to ([www.sdwt.org](http://www.sdwt.org)) for our meeting time and location. If you have any questions, please contact us at ([info@sdwt.org](mailto:info@sdwt.org))

Date \_\_\_\_\_

Name \_\_\_\_\_

Address \_\_\_\_\_

City \_\_\_\_\_ State \_\_\_\_\_ Zip \_\_\_\_\_

Phone # \_\_\_\_\_

Email \_\_\_\_\_

Our membership allows our club to hold monthly meetings, enjoy refreshments, watch expert demonstrations and participate in classes. As a member, you will have access to woodturning supplies, video library, wood resources and mentorship.

Check out our website at [www.sdwt.org](http://www.sdwt.org)

San Diego Woodturners  
9984 Scripps Ranch Blvd. #198  
San Diego, Ca. 92131



# 39th Annual Design in Wood Competition

The International Exhibition of Fine Woodworking. In association with the San Diego Fine Woodworkers Association

San Diego County Fair - Del Mar, CA, **June 5th to July 5th, 2016** (Key Date for Entry Registration is Friday, 1 May through the SD County Fair Website (On-Line)).

Time to be working on/creating your annual entry's for the up coming SD County Fair - **Design in Wood** competition! There are 4 categories for you to consider (also sample pics below):

Woodturning - Facework - grain perpendicular to the ways of the lathe

Woodturning - Centerwork - grain parallel to the ways of the lathe

Woodturning - Embellished / mixed media

Woodturning - laminated/ segmented

For details, please check out the website @ [sandiegofinewoodwoodworkers.com/design-in-wood](http://sandiegofinewoodwoodworkers.com/design-in-wood)

When executing your special turned object for entry, please keep in mind the following areas of judging criteria:

**Overall craftsmanship** – including difficulty, special techniques, size, details, etc.

**Understanding and use of materials** – including wood figure, grain, etc.

**Appearance and quality of finish** – appropriate for type of wood, intended use, etc.

**Design integrity** – proportions, intended use, etc.

**Use of form and color** – eye appeal, etc.

Creative entries from our SDWT members is highly encouraged and opportunity to show and sell your turned item. Wishing you good luck.



More Info at [SDFWA.ORG](http://SDFWA.ORG)/Design in Wood tab

# AAW | AMERICAN ASSOCIATION OF WOODTURNERS



**Link:** <https://www.woodturner.org/Woodturner/Events/Annual-Symposium---Conference/2020-Symposium---Louisville/Woodturner/2020-Symposium---Louisville/2020-Symposium---Louisville-Main.aspx?hkey=ab43eb3b-d5fa-47e9-9660-f1012f09eb01>

**June 4-7, 2020 Kentucky Exposition Center, Louisville, KY**

## Raffle

Were Back! and we have a great listing of items for our January raffle. Our raffle is a self-sustaining program and an opportunity for that “Red Ticket” that are free to members who bring in an item(s) for our Instant Gallery to display.

Participate in the gallery with an item(s) and get a red ticket. The red tickets are mixed with our regular purchased raffle tickets for the drawing. So come and participate. More importantly share some of those Great turnings that always amazes me as to the turning talent in our club displayed in our Instant Gallery.

This months listing of raffle items: Four Jaw Chuck, tool handles, Thompson detail gouge, tool rest, live enter, Craft gift certificates. and other items.

**Jeff Neff - Raffle Committee Chair.**



## From the DVD Library



Hi All

Check out the DVD library at our next meeting in January and on the members web site to see what is available for your selection and check out. There is a wide variety of turning DVD's available for inspiration or help in skill enhancement.

1. You can ck out 3 DVD's per month
2. DVD's ck'd out must be returned the following month. Late fee - \$5.00 assessment per DVD per month.
- 3 . Enjoy the DVDs. You can watch them more then once!

### NOTTINGHAM ACCESS

For access to the Nottingham Arts Center contact Terry Sullivan via e-mail ([go2tms2@gmail.com](mailto:go2tms2@gmail.com)). A voice message may additionally be left at the number listed in the member directory. Include the day and time you wish to arrive as well as the purpose of your visit. You must have approval from Terry or his representative for access to the facility.

Do not enter the Nottingham facility or grounds without prior approval or without the project leader present.



# Resources

## Tropical Exotic Hardwoods

2270 Camino Vida Roble site "B"  
Carlsbad, CA 92008 (760-434-3030)

## North County Tools

955-A Rancheros Drive  
San Marcos, CA 92069 (760-743-2004)

## Enviro-Safety Products (No discount)

516 E. Modoc Ave.  
Visalia, CA 93292—7630  
(800) 637-6606

## Rockler

8199 Claremont Mesa Blvd  
San Diego, CA 92111 (858 268-1005)

## The Hardwood & Hardware Co

8849 Complex Dr  
San Diego, CA 92126  
(858 - 536-1800)

## Woodworker West

PO Box 452058  
Los Angeles, CA 90045  
(310) 216 - 9265

## Tool Depot

3464 Pickett St  
San Diego, CA (619) 220 - 7111  
1655 Broadway #13  
Chula Vista, CA (619) 585-800

## SD Urban Timber **New**

922 Industrial Blvd  
Chula Vista, CA 91911  
619-207-4084 ([sdurbantimber.com](http://sdurbantimber.com))

## American Furniture Design

Ben MatteTung Oil can be purchased here

2243 Mountain View Dr.  
Escondido, CA  
(760) 743-6923

## Fix My Batteries

1291 Simpson Way #F  
Escondido, CA 92029  
(760) 747-8762  
Josh Zeller, owner  
10% discount on products and battery rebuilds

## Bennett Crone Lumber and Plywood, Inc. **New**

1202 Piper Ranch Rd  
San Diego, CA 92154  
619-661-0667  
([Bennettcrone.com](http://Bennettcrone.com))

**SDWT Meetings are generally held at the Nottingham Center for the Arts**

**240 S Bent Ave, San Marcos, CA 92078**

The fenced parking lot is located on Bent Ave. at the alley just behind the businesses on San Marcos Blvd. The meeting is held in a building behind the parking lot. Parking is available in the lot or back behind the businesses. (**also go to [sdwt.org](http://sdwt.org)—meeting location Tab for more info**)



# January Demonstration Summary



If you were looking for the pro's and con's of turning acrylics, this was the demo to sit in on. The demonstration was provided by Art Majerus who enlightened all as to the various aspects of acrylics and turning. In addition, he demonstrated various turning tools to use while turning acrylics to include his favorite of using a roughing gouge but also turning acrylics with scrapers such as with Easy Wood tools.

Acrylics addressed during the course of the demonstration included:

Acrylic/Acrylic Acetate, Rhino Plastic

Polyester Resin, Epoxy Resin

Aluminite, Silmar 41 Polyester Resin

Cebloplast, and Ebonite.

An informative demonstration that if you have further questions, catch Art at one of our general meetings. **Thanks** Art.

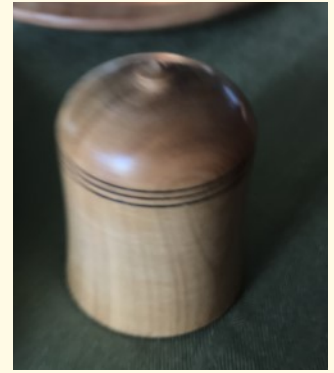


Photo's above of some of the acrylic material on display during Art's demonstration.

# January Instant Gallery



# January Instant Gallery



# January Instant Gallery



# January Instant Gallery



# Empty Bowls - San Diego

## May 2020 @ La Jolla Methodist Church

If you happen to be turning a bowl, consider turning extras (prefer 6" to 8" dia), to donate for Empty Bowls. **SDWT** has been a supporter of the Empty Bowls event over the last few years with turned bowls such as shown in the pics (far right and left below).

Sally Ault will be collecting your turned bowls over the next few months (Feb/March/April) for the event. Just bring to the meeting on Feb 15th, March 21st or April 18th. Thanks for your support.

**Empty Bowls** is a grass roots project which raises funds to help feed the hungry. Potters (*and woodturners*) donate bowls, Restaurants and Bakeries donate soups and breads, Many people donate their time; all to create this event. The public comes in, and for a donation of \$20 each, selects their own bowl, enjoys the soups and breads. The Empty Bowls event donates the money to TACO (tacod.org). More info at <https://www.facebook.com/EmptyBowlsSanDiego/>



### Safety thoughts: A Quiz...

1. True or False: Safety glasses are the BEST way to protect your eyes when turning?
2. Why is it important to rotate the hand wheel before starting the lathe?
3. True or False: Using the tailstock is a good safety practice?
4. True or False: Wearing gloves while turning is a good safety practice?
5. Why are dull tools dangerous?

Options: 1) They require excessive pressure to make them cut

2) A dull edge could cause vibration, causing the blank to break

3) A dull edge could cause slippage, causing the turner to lose his or her balance.

4) All of the above.

(See Answer's on page 34)



# “OUT ON A LIMB”

By Ken Haines

## “RIGHT IN OUR OWN BACKYARD”

This month I'm writing about many of the native trees available to us in San Diego County, along with some little-known facts about San Diego County itself.

According to the U.S. Census Bureau, the county has an area of 4,526 square miles, of which 4,207 square miles is land and 319 square miles (7.0%) is water. The county is larger in area than the combined states of Rhode Island and Delaware.

San Diego County has a varied topography. On its western side is more than 70 miles of coastline. Most of San Diego between the coast and the Laguna Mountains consists of hills, mesas, and small canyons. Snow-capped (in winter) mountains rise to the east, with the Sonoran Desert farther to the east. Cleveland National Forest is spread across the central portion of the county, while the Anza-Borrego Desert State Park occupies most of the northeast.

Although the county's western third is primarily urban, the mountains and deserts in the eastern two-thirds are primarily undeveloped backcountry. Most of these backcountry areas are home to a native plant community known as chaparral. San Diego County contains more than a million acres of chaparral, twice as much as any other California county.

**San Diego County has more endangered species of plant and animal than any other county in the United States, surpassed only by the state of Hawaii.**

Some of the native trees and shrubs in our backcountry are:

**Sugar Pine** - *Pinus lambertiana*, found in San Diego east county, Cleveland National Forest and in the Cuyamaca Range. Tall (over 100') North America's largest pine, very long cones at branch tips, 4" long needles in bundles of 5. Freshly cut - exudes sweet-smelling resin.

**Coulter Pine**- *Pinus coulteri*, found on dry rocky slopes, flats, ridges and chaparral. 40' to 60' tall. 9' long needles in bundles of 3. Largest cones of any of the pine species.

**Jeffery Pine** - *Pinus jeffreyi*, very tall pine, (100'-130'), very similar to Ponderosa Pine, but with larger cones. If comparing the two- Jeffery Pine smells like vanilla or pineapple, whereas Ponderosa Pine smells like turpentine. 3 needles, 7" long, green to yellow-green. Generally found at elevations higher than Ponderosa Pines. Named in honor of botanist John Jeffery.

**Ponderosa Pine** - *Pinus ponderosa*, Large tree (70'-130' tall) 3 needles, 7" long. Most economically important western yellow pine. Cones smaller than Jeffery Pine.

**Torrey Pine** - *Pinus torreyana*, A rare pine species in the United States. An endangered species growing only in the Torrey Pine State natural Reserve and on Santa Rosa Island. Endemic to the coastal sage and chaparral regions of Southern California. 20' to

(Continued on page 25)



50' in height. Often twisted or stunted by ocean wind. 5 needles, 9" long. The rarest North American pine. Named for botanist John Torrey.

**Parry Pinyon** - *Pinus quadrifolia*, The scarcest of the pinyons in North America. Found in Southernmost California and extending into Baja California. Usually found mixed in with junipers. Usually needle bundles of 4, 1" long.

**Cuyamaca Cypress** - *Cupressus stephensonii*, found only in the headwaters area of King Creek in the Cuyamaca Mountains, Cleveland National Forest. Endemic to Southern California. Generally 40' to 60' tall with pale blue-green foliage. **As a result of the 2003 Cedar fire, these trees are now listed as a Critically Endangered species. The entire native (world) population is down to 30 to 40 individual trees.**

**Tecate Cypress** - *Cupressus forbesii*, found in 4 small groups, 3 being in San Diego county, on Otay, Guatay and Cuyamaca Mountain. 20' to 30' tall, smooth, reddish bark, dark green foliage.

**Bigcone Douglas Fir** - *Pseudotsuga macrocarpa*, An evergreen conifer native to the mountains of Southern California. Usually 50' to 70' feet tall. Found in the Cuyamaca Mountains in small communities. The tree is shade tolerant and prefers to grow on slopes. The tree is known for having the largest cones in this genus, therefore the name.

**Incense Cedar** - *Calocedrus decurrens*, A conifer native to western North America, the most widely known species in this genus. A large tree, often 60' - 100' tall, narrow, columnar, with bright green foliage. It is named for the incense-like odor of its sap. An important wood for pencils, as well as lumber.

**Valley Oak** - *Quercus lobata*, Grows into the largest of North American oaks. Endemic to California, growing in interior valleys and foothills. Mature trees may attain an age up to 600 years. This is one of the deciduous oaks and requires a source of groundwater year-round. The tree has a thick, ridged bark resembling alligator hide. The deeply lobed leaves aid in identification.

**California Black Oak** - *Quercus kelloggii*, A large, deciduous tree growing in mixed evergreen forests. Often 75' or taller. Found along foothills and lower mountains of San Diego County. The tree can grow in many types of soils, but the soil must be well drained. New, emerging leaves are reddish or purple.

**Canyon Live Oak** - *Quercus chrysolepis*, The most commonly seen and most variable oak in California, general found in moist canyons and on north-facing slopes. Shrub to medium tree typically under 40' tall. Wide spreading with dense dark crown. As an aid to identifying - Leaves are geometrically flat. The roasted seeds are a coffee substitute and can also be made into a craft brew.

**Interior Live Oak** - *Quercus wislizeni*, Evergreen, shrubby, medium tree 30' tall, often found in the foothills. very similar to Coast Live Oak. Common on dry slopes in foothill valleys. Named for its collector, Friedrich Adolph Wislizenus.

(continued on page 26)

**Coast Live Oak** - *Quercus agrifolia*, Highly variable, often shrubby evergreen oak, 25' to 50' tall but very broad. Short trunk and dense crown. Acorns mature in one growing season.

**Engelmann Oak** - *Quercus engelmannii*, Small, To 35', generally evergreen, but may be drought-deciduous during hot summers. The Engelmann Oak is considered to be the northernmost species of the subtropical oaks. The wood is dark brown, but tends to warp and split while drying. Common in open oak woodlands in interior foothills. Turns beautifully and is worth the effort.

**California Sycamore** - *Platanus racemosa*, A medium to large tree, 60'+, common to valleys and canyons, floodplains, springs, streams, and rivers. Bark is a patchwork of pale colors with leaves like that of a maple. Wood is cream-white to grey.

**White Alder** - *Alnus rhombifolia*, A deciduous tree of small to medium height, usually under 70', often multi-trunked. Locally common in dry, open rocky settings along permanent streams and adjacent slopes. Primarily found in the chaparral regions.

**Toyon**- *Heteromeles arbutifolia*, An evergreen shrub or small tree, usually under 20' tall. Dense and dark green leaves form a striking contrast with clusters of red berries in winter. Toyon is a prominent component of the coastal sage-shrub community, and is a part of drought-adapted chaparral and mixed oak woodland habitat. This is a beautiful wood to turn. Great color.

**Manzanita** - *Arctostaphylos manzanita*, Evergreen shrubs or small trees, 6' to 10' high, generally multi-branched. Manzanita is found in the chaparral foothills of San Diego County. This plant does very well on very little water and poor soil. Manzanita is one of the first plants to reestablish after a fire, needing the heat of the fire to open the seed case and scarify the seed coat. The plant is characterized by smooth red or orange bark and stiff, twisting branches. The wood is notoriously hard to cure, mostly due to cracking against the grain, but the wood is so beautiful, it is well worth the effort. Sunlight smooths and bleaches the wood to a light grey or white, making it look like animal bones. The best part of the manzanita is the root burl, about 2" below the soil. The plant may not look like much above ground, but there's a treasure below.

**California Lilac** - *Ceanothus aboreus*, California lilac or Wild lilac, is another of the chaparral shrubs found in San Diego County in abundance. This is the plant that colors the hillsides in all shades of blue when blooming in the spring. Lilac is an evergreen shrub or small tree, multi-trunked, 10'-20' tall. The leaves have a shiny upper surface that feels "gummy" when pinched between thumb and forefinger. Lilac can be extremely fragrant almost to the point of nauseating. Again, like manzanita, fire is necessary to trigger seed germination. The seeds can lie dormant for hundreds of years. Also, like manzanita, the best part, the root burl is underground.

### ***Some last minute notes and thoughts***

As a word of caution: When digging for burls or cutting wood - be sure to have permission. A lot of the natives are protected. All the wood species mentioned turn and finish very well - some just require more time, patience and effort. Regarding the Pines - The needle count given can vary. For example, Sugar pine can have needle bundles of 3 and/or 4, but the most common is 5. The bark and the cones among other characteristics are also keys to identification of pines and other conifers. Until next time- I'm out on a limb.

**KH**

# Wants And Disposals

Wants and Disposals is open only to current members that want to Buy, Sell, or Trade equipment or supplies. It is not intended as a commercial market place. These listings are presented as a service to our members. It is not an invitation to solicit nor permission to contact the member on matters not relating to the listing.

Items for Wants and Disposal may be emailed to **Dave John** ([email addr in Members listing - Members Only Area](#)) (Up to three pictures may be included and will be placed within Wants and Disposal section of this Newsletter.

## **ABRANET MESH GRIP ABRASIVE**

We have: 80, 120,180, 240, 320, 400, 600 and 800 grits for \$2 per sheet.

In addition, we have an "Intro Pack" which contains all these grits for \$10.

Available at the next meeting.

## **Cyanoacrylate (CA GLUE)**

Parafix Cyanoacrylate Adhesives, manufactured in the United States by Parson Adhesives, Inc.

- Parafix #3420 Thin CA Glue 2 oz bottle - \$4.00
- Parafix #3401 Medium CA Glue 2 oz bottle - \$4.00
- Parafix #3416 Thick CA Glue 2 oz bottle -\$4.00
- Parafix #3422 Gel CA Glue 2 oz bottle - \$4.00
- CA Applicator Tips Pkg of 5 applicators - \$3.00
- Parafix #155 CA Activator 12 oz aerosol can - \$11.00



Looking for a turning Mask. More info at <https://pekesafety.com/product/powercap-powered-particulate-respirator/>

Was a popular item at the recent AAW symposium and shown at our last meeting. Cost around \$500.

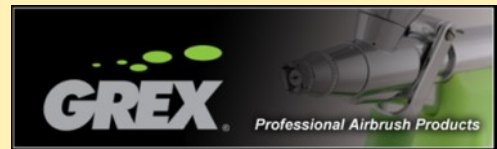
Your Ad here.....Free to members 1X.



11717 Caminito Vantana • San Diego, CA 92131  
858-395-0562 • airbrushingwood.com

**Joe carries the full line of Grex Professional airbrush products including:**

- Airbrushes - Tritium pistol grip and Genesis XGi pencil grip
- Compressors
- Accessories
- Private Stock acrylic paint



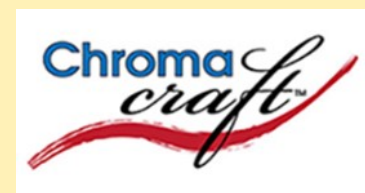
**Joe carries all Grex Air Tools, featuring:**

- AOS 368 Random Orbital Sander
- AG 368 Angle Grinder and Carving Tool



**We now carry ChromaCraft products including:**

- ChromaCraft Wood Dyes - bottles and markers
- ChromaCraft Acrylic Lacquer
- ChromaCraft Gilt Paste
- ChromaCraft Iridescent Paint Additives
- Viking Sunset Bowl Kit (Nick Agar)



Learn more about the above products and see Joe's Gallery at [Airbrushingwood.com](http://Airbrushingwood.com). (highly recommended) along with his educational material on color/airbrushing and much more.

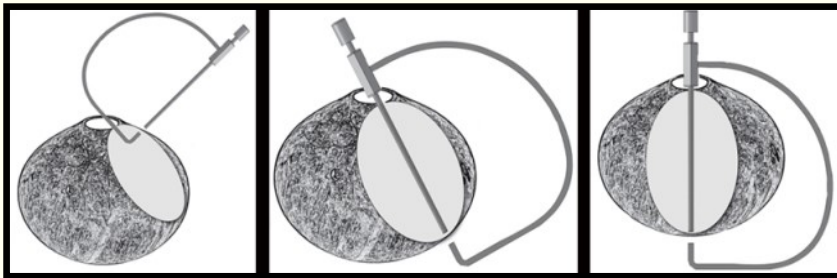
# Hollow-Pro Tools™

Designed by professional woodturner **Mike Jackofsky** and manufactured in the USA by the *Hunter Tool Company*.

## 1) **The Hollow-Pro Rocket Tool:**

These tools feature a unique negative angle built into the tip. They have been specifically designed to use the Hunter carbide cutters; the negative angle makes the carbide less aggressive and easier to control. Hollow Pro Rocket tools are professional, fast and efficient hollowing tools for making hollow vessels up to about 7" high x about 7" diameter. These 8" tools have 3/8" shafts to allow hollowing through very small restricted openings. The tools use replaceable #1 size carbide cutters and are designed to fit into any large handle with a 3/8" or 1/2" opening. (Tip: place the screws from these handles on the side or top of the tools, so the bottom will slide smoothly on the tool rest).

The round shafts of these tools can be rotated slightly to make clean "shear" cuts and the bent tool is also very useful for undercutting the opening on larger hollow vessels. The kit comes with one straight and one bent tool and includes replaceable Hunter #1 carbide cutters for clean cuts and durability, and a Torx wrench for rotating and replacing the cutters as needed.



2) **The Hollow Pro Calipers** provide accurate measurements in crucial areas of hollow vessels and open bowls.

Hollow-Pro Calipers are precision made from steel and aluminum for maximum strength while maintain a comfortable light weight. The small size will work for hollow forms up to about 8" in diameter and up to 6 1/4" deep. The larger size works for hollow forms up to about 18" in diameter and up to 11 3/4" deep.

For more info and pricing, email Mike at ([info@mikejackofsky.com](mailto:info@mikejackofsky.com) or Visit Mike's Web site: [www.mikejackofsky.com](http://www.mikejackofsky.com).) for ordering and obtaining your Rocket and Caliper tools. You will be glad you did .



Mike Durlak, manager of the San Diego Rockler Store, is offering the San Diego Woodturners this exclusive discount coupon. Valid only at the San Diego location on Claremont Mesa Blvd, this coupon gives each SDWT member 20% off one item (with exclusions as noted).

The coupon (shown below) is valid for one use only per members HOUSEHOLD and the member must show their current SDWT membership card.

Mike is very supportive of our club and willing to continue the discount program as long as it is not abused.

Be sure and give Mike a big smile and hearty thanks when you redeem your coupon.

**\*\* 20% OFF \*\***

ONE ITEM

SAN DIEGO WOODTURNER Member



**Coupon Required for Discount, No Exceptions**

**EXPIRES 02/16/2020**

Coupon may be used ONCE! Does not apply to previous purchases. Power tools excluded. Sale items excluded. Discounts may not be combined. Discount Restricted Items Excluded. Sale prices can not be adjusted to use coupon .(Showing current year SDWT Membership Card required). When in doubt, ask Mike.

**\*\*\*\*\*Coupon WILL not be Honored past the Expiration date\*\*\*\*\***

**\*\*\*\*\*ONE COUPON PER MEMBER HOUSEHOLD ONLY\*\*\*\*\***

## Mentoring Program

Our mentoring program is one of the unique benefits of our club. Our mentors can help with basic to complex turning and teach safety along the way. This is a great way to start out or hone your skills with complex tasks taught by turners skilled in specific areas of turning. Our mentors are volunteers and are dedicated to sharing information on all facets of woodturning.

Rest assured however, that all of our mentors are easy to work with. Most often the mentor opens his/her shop to the applicant at a mutually agreed upon time and schedule. A list of mentors and their specialties are listed just below and on the next page.

So how does the mentoring program actually work? The program is flexible. Just contact a mentor below and arrange a time and date to meet.

Are you a new turner? I want to make sure we meet your needs! Please call me with suggestions on what we can do to help you. Thanks.



**Jeff Neff – Mentor Committee Chairman (619-384-3183)**

## Active Mentors

**Jeff Neff (Chairman)**

Mira Mesa / (619) 384-3183

**Allen Brooks**

Alpine / (619) 445-4769

**Pete Campbell**

Temecula / (951) 767-0455

**Ed Ducharme**

Santee / (619) 444-9389

**Joe Fleming**

San Diego (Scripps Ranch)

(858) 586-0562

**Mark Jacobson**

Escondido/(858) 449-5669

**Brian Saunders**

San Diego (858) 571-5384

**“Mentors do not give you a shortcut, but they streamline the process. They invariably had their own great mentors, giving them a richer and deeper knowledge of their field. Their ensuing years of experience taught them invaluable lessons and strategies for learning. Their knowledge and experience becomes yours; they can direct you from unnecessary side paths or errors. They observe you at work and provide real-time feedback, making your practice more time efficient. Their advice is tailored to your circumstances and your needs. Working closely with them, you absorb the essence of their creative spirit, which you can now adapt in your own way. What took you ten years on your own could have been done in five with proper direction.”** From the Book - *Mastery* by Robert Greene

**Oskar Kirsten**

San Diego (Pacific Beach)

(858) 274-3472

**Jim Meeks**

San Diego

(Rancho Bernardo)

(858) 485-6544

**Don Owen**

Chula Vista / (619) 843-0016

**Leonard Badour**

Carlsbad (619) 508 -6383

(continued from page 31)

### **Are you a Beginning Woodturner?**

SDWT Mentoring program can hook you up with a knowledgeable turner who can help you make decisions about the equipment you would like to buy and show you how to safely put the chisel to the wood. You need to specify your current level of expertise, what you would like to learn, where you live, and how far you would be willing to travel for a mentoring session. By requesting a mentor, you can get help with your specific problem on a one-on-one basis.

### **How to use SDWT mentoring Program:**

Email the mentor coordinator at [jneff@san.rr.com](mailto:jneff@san.rr.com), or talk to Jeff Neff at a meeting, and describe your skills or needs. He will do his best to get you matched up with a mentor. All our mentors are listed in our web site, and we've found this to be a popular program that you can make new friends. Mentors and mentored must be members of SDWT. Let me introduce you to our Mentors and their skill set they bring to the table:

#### **Allen Brooks (619) 445-4769**

Alpine, CA

Allen is a good all around woodturner but emphasizes lidded containers which includes the use of exotic woods, inlays, suction or friction fit lids, design, finishes and marketing.

#### **Mark Jacobson (858) 449-5669**

Escondido, CA

Mark is great at wood preparation, chain sawing, and bowl turning.

#### **Brian Saunders (858) 571-5384**

San Diego, CA

Brian is great at pen preparation, pen turning, and CA finish application.

#### **Pete Campbell (951) 767-0455**

Temecula, CA

A versatile turner, Pete can help you in almost every area of turning. He is best known for his large hollow forms and lidded boxes.

#### **Tom Cummings (Honorary Mentor)**

(760) 745-2769

Escondido, CA

#### **Ed Ducharme (619) 444-9389**

Santee, CA

Ed is best known for his spindle turnings and his skew work, but like all mentors he can help you in any area.

#### **Oskar Kirsten (858) 274-3472**

San Diego, CA (Pacific Beach)

Oskar is probably best known for his hollow forms, but can handle any aspect of wood turning.

#### **Joe Fleming (858) 586-0562**

San Diego, CA (Scripps Ranch)

You need it, Joe can do it. But he also is known to provide expertise in air brushing.



## **Safety First in 2020!**

**(Safety is always a worthwhile routine)**

#### **Jim Meeks (858) 775-7740**

Rancho Bernardo, CA

Jim belongs to the Poway Arts and Crafts Guild. He likes to do a variety of small projects to present and sell at the craft fair. Projects range from small items like ornaments, peppermills, earring dolls, pens, bottle stoppers, etc. Also large turnings such as platters, bowls, and hollow forms.

#### **Don Owen (619) 843-0016**

Chula Vista, CA

Don is an amazing, prolific bowl turner. If you have any questions about chain saws, gathering wood, cutting blanks and selecting the best features of the wood. Don is your man.

#### **Jeff Neff (619) 384-3183**

San Diego, CA (Mira Mesa)

Jeff likes to pursue all types of turnings from bowls and platters, boxes, hollow forms, pens, pierced, textured or carved.

#### **Leonard Badour**

(619) 508-6383

Carlsbad, CA

Do you have a Tormek Sharpening system and need some help on understanding how to use this tool? Call Leonard.



# 2019 SDWT Board Members and Committees

## SDWT BOARD MEMBERS

### **President**

Brian Saunders (858) 571-5384

### **Vice President**

Karen Freitas (760) 727-3950

### **Secretary**

Don Wolfe (760) 710-7370

### **Treasurer**

Geri Gabriel (619) 405-6383

### **Members at Large**

Paul Simpson (760) 703-3285

Jeff Neff (619) 384-3183

Oskar Kirsten (858) 274-3472

Sally Ault (619) 415-5308

Dave John (760) 728-0403

Hal Gorss (760) 432-0018

Don Owen (619) 843-0016

Terry Sullivan (760) 585-8217

Jon Chernow (760) 586-4621

## COMMITTEES

### **Newsletter**

Dave John (760) 728-0403

### **Audio/Visual**

Mike Foreman (760) 822-7873

Ron Kaplan (760) 290-3620

### **DVD Librarian**

Carolyn Jones (760) 518-6187

### **Raffle**

Jeff Neff (619) 384-3183

### **Del Mar Fair**

Mark Jacobson (858) 449-5669

### **Programs/Classes**

Karen Freitas (760) 727-3950

Sally Ault (619) 415-5308 & AAW Liaison

### **Membership**

Esther Assemat ((664) 123-2210

### **Wood Resources**

Dan White (619) 403-0377/Mark Jacobson

Don Owen/ (619) 843-00167

### **Refreshments**

Steve Frick (858) 442-3845

Gail Morrison (760) 630-8207

### **Instant Gallery**

Oskar Kirsten (858) 274-3472

### **Mentors**

Jeff Neff (619) 384-3183

### **TAV**

Paul Simpson (760) 703-3285

### **Sunshine Committee**

Mavis Porter (858) 755-3177

### **Webmaster**

David Heiser (760) 703-3027



# The Last Page - “Cutoffs”

(Odds and Ends)



As members of the San Diego Woodturners, you may come across an opportunity for us to add to our wood inventory and made available to our membership at nominal cost.

If you hear of anyone needing to move wood off their property please give me a call

**Dan White (619) 403-0377.**



## Answers to Quiz on page (21) (source: MOREWOODTURNING magazine)

1. False: Turners should always wear a full-face shield to provide sufficient protection against flying debris. Safety glasses are not enough.
2. To make sure the work clears the tool rest before turning on the lathe.
3. True. Using the tailstock, having your work between centers, reduces the possibility of the blank slipping off the lathe.
4. False. The glove could cause your hand to be drawn into the spinning lathe. Always remove loose clothing, jewelry, and gloves when turning.
5. All options are correct and reasons that dull tools are dangerous.



## San Diego Woodturners (SDWT)

A Nonprofit Corporation

A Chapter of the AAW

9984 Scripps Ranch Blvd #198

San Diego, CA 92131



**Next Event - February 15th, 2020**

**Barbara Dill**

**9 AM until 4 PM**

**Nottingham Arts Center, San Marcos, CA**

**\$25-Members/\$35 Non-Members**