



San Diego Woodturners

Proud Founders of the Turn-Around-for-Vets (TAV) Program



Volume 2022 Number 12

December 2022

9984 Scripps Ranch Blvd #198, San Diego, CA 92131

www.sdwtd.org

**This month at
SDWT:
Annual Holiday/
Christmas Party
@ Nottingham
10 December, 2022
(10 AM-2 PM)**

(Brunch Around 1130ish (see page 4 for details))



Contents:

<i>Shavings...from the Prez</i>	2	<i>Member "Chips"</i>	8	<i>Rockler Coupon</i>	26
<i>Calendar of Events</i>	4	<i>Membership Form</i>	9	<i>Mentors</i>	27
<i>Drop-In Sat Rtrns</i>	5	<i>Safety</i>	10	<i>Board/Committee</i>	
<i>TAV Update</i>	6	<i>From the Webmaster</i>	15	<i>Members</i>	28
		<i>Wood Resources</i>	16	<i>Cut-offs</i>	29
		<i>DVD/Book Info</i>	17		
		<i>Instant Gallery</i>	18		
		<i>Virtual Demo's (AAW)</i>	24		



Dave John

SHAVINGS

from the Prez . . .

Did you capture a note or two on process and/or turning technique that was presented by Stuart? He is one of the best in our world of woodturning and always there is something to learn or re-learn that if you seen him demonstrate before, your surely to pick-up on something you missed. I know I did. I have seen Stuart demo at symposiums, his turning technique via video's and YOUTUBE, and read his articles he has authored with AAW. Thanks Stuart for a Great Demo. It was a pleasure to have you return for classes and demonstration in San Diego.

As you are aware from our November meeting at Nottingham we held elections. I want to welcome back three returnee's for their second term to the Board: Sally Ault, Jon Chernow, and Paul Simpson. Valued members and a big Thank You for their continued service to the club. In addition, your vote brought in a new Board member, Jennifer Jones. Welcome, Jennifer. You were further advised that the current Board members, at a November Board meeting, voted and approved the extension of Geri our Treasurer. Her special skills and keeping us in line with our finances are most valued and we thank her for her past two terms of service to the club as well and foreseeably in the near term on this extended term. Lastly, our Thanks to outgoing Board member Don Wolfe who has served as the Board Secretary over the past 6 years.

A special **Drop-in-Saturday**: Our volunteer member mentor's for Drop-In agreed to hold a secession on 17 December (0830-1200). If your having trouble with that last minute turned Christmas gift, this is the place to come to. In addition, a couple of the mentors may be turning a few Christmas ornaments just for fun.

- A few notes to reiterate: 1) Drop-In is for members only, 2) **You must bring your own tools** (the club does not have individual turning tools other then the lathes), 3) Safety shield/glasses (PPE) required!

The focus is collaboration and to provide assistance to members who may be having an issue on a turning project and turning in general. Beginners are most Welcome or just come on down to share in woodturning with fellow members.

Committee Volunteers and TAV Crews: Thank You! for your continued support of the club and your efforts to make our club better. Without you we would not be able to do what we do and share in the craft and art of woodturning.

Looking back: It has been an exciting year at SDWT. Our membership is at 227 that I believe is an all time high. We have had some great demonstrations and classes along with a couple of special events and continue to experience success at our three TAV sites in helping our service men and women. We continue to promote our craft at festivals such as our participation at the Vista Strawberry festival and of course our turning of tops and pens at the San Diego Fair in June. Steve Frick and Jon Chernow will be heading up our preparations for 2023 so look for more info on this in the coming months. And Thanks to All that make our club what it is. I am looking forward to 2023.

Safety: There is always room to talk about “Shop Safety” as Norm Abram would say. I refer you to a two part article, with part I this month, part II presented in January, by Brian Saunders, MD, and past member Ken Roth MD on Wood Dust Safety and Wood Toxicity. A couple of topics that you should increase your awareness on. See page 9-13 in this newsletter

Our **Holiday/Christmas Party** is on the 10th of December at Nottingham. This is the last event for 2022. There will be a gift exchange (turned item or something related to woodturning) and some great food to eat. Remember, if you bring a turned plate to eat from you will get head of the line privileges. Trying to recall how to turn a plate? See Don Owen’s demo he recently did in September to review technique and process on turning a plate. **And something different this year. Bring a weed pot for display as Center Pieces on each of our tables.**

Looking Ahead:

Sally is pulling together another year of great demonstrations for you our members in 2023. More on that in January in the Newsletter and at our general meeting 21 January. Joe Fleming kicks off the January demonstration schedule.

Anticipating getting a new tool or woodturning equipment for Christmas? Plenty of opportunities forthcoming for needed turned items to use that new tool. Our Torrey Pine Reserve Gift Shop via TAV continues to need Torrey Pine turned items, Small bowls and the like for festivals, Weed Pots for Lumbercycle. Turned pens and Tops (particularly for next years Fair), Empty Bowls this next spring (2023) is on the horizon and the need for your small 6-8” turned bowls.

Have you turned your annual ornament yet? There is a great tutorial in Tips and Techniques in our Members Only area on turning an ornament (Making a Globe & Icicle by Phil Stivers).

So plenty going on in Woodturning along with turning item requirements locally needed.

Membership: If you haven’t yet renewed your membership please do so for 2023. Passwords etc., for the new year will likely be sent out early February. So don’t delay, renew today.

Lastly:

The Christmas Holiday and New Years celebrations are a time with family and friends. In addition, as we approach the Holiday Season, take a moment to pause and give Thanks to all our military service personnel, our first responders, doctors/nurses/health providers, and leaders of our Nation as we live in challenging times. For all our members in SDWT, have a Safe & Happy Christmas and New Year. See you in 2023.

Stay safe and have fun. **“Making Better Turners Together”**



Dave John

SDWT Demonstration/Event Schedule for 2022



I hope you are all staying well. We are blessed to have such a wonderful pastime to keep us busy.

Our program schedule will continue to provide a variety of demonstrations to enhance your skills and maybe offer something you haven't tried before..

Sally

P.S.: On the Horizon: **Jan: Joe Fleming.**

Annual Holiday/Christmas Party at SDWT

The Annual SDWT Holiday/Christmas Party will be held on **10 December**. It is going to be a Great time with Food, Fun, Comradery, and Woodturned item gift exchange as a highlighted event of the festivity.

Time: 10 AM to 2 PM

When: 10 December, 2022

Where: Nottingham Arts Cntr, San Marcos

What to bring:

- 1) As this is a Potluck Lunch affair, bring something yummy for 10 (Entrée or Dessert). (Paper plates&cups/Knives/forks/Napkins provided) Water/Coffee also
- 2) For those desiring to participate in the Woodturned item gift exchange, bring a wrapped/bagged woodturned item or something related to woodturning.

Other Info: Spouses, and family members are all Welcome to attend.

HO, HO, HO

P.S. Hmmmmm...I need to check on those San Diego Woodturners on my list ...Let me see Naughty or Nice?

(Stay Tuned...maybe we will all learn more at the forthcoming SDWT party!) See you all there!



“December Drop-In Saturday”



The idea behind “Drop in Sessions” is to set up a shop environment of collaboration and a place to receive assistance in answering your turning questions or help with a technique.

Our days are typically on a select **Saturday of the Month**. **8:30 am to 12:00 pm**

San Marcos, Nottingham Arts Center.

(Drop-In Returns December 17th, 2022)

Participants must be members of San Diego Woodturners Club (SDWT) in good standing. Members under the age of 18 years may participate with parental permission and a parent or guardian must be present.

Participants are expected to help with set-up at the beginning of class and clean-up at the end of class.

Safety is ALWAYS a Priority!

- Please remember: Safety is Priority. Only SDWT members using machines

- **Bring your own tools, wood and eye protection!!!**. (There may be the odd piece of wood around if needed)

Turn Around for Veterans (TAV)



Turn Around for Vets (TAV) is a critical program of the San Diego Woodturners Club. All TAV activities are carried out by a dedicated, unpaid group of volunteers so that 100% of donated funds, designated for TAV, are used to purchase supplies and equipment and to support the program.



Paul Simpson

On November 22 I resupplied the Torrey Pines Gift Shop. They were ecstatic with everything I brought. They took 98 tops and 57 Christmas trees; those are always in demand. Ray Brooks helped Karen Freitas with the trees. The tops were left over from the fair. We also had a great selection of bowls, plates and a platter courtesy of Carolyn Jones. Bottom line is they are donating over \$1500 to TAV! Great job to everyone who contributed items. They have asked that I plan another visit for late February or March. So keep the Torrey Pines turned items coming.

Some members asked about making a contribution honoring Tom Lightner. The Lightner family has requested that donations be made to San Diego Woodturners (TAV). Several people have donated including one family from Wisconsin.

(See letter to the Lightner Family next page)

Happy Holidays and Merry Christmas!





San Diego Woodturners, Inc.

A 501(c)(3) Organization
9984 Scrips Ranch Blvd #198
San Diego, CA 92131

www.sdwt.org
info@sdwt.org



Sunday, 13 November 2022

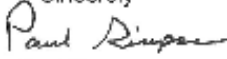
Paul Simpson
TAV Chairman
simpson.paul71@gmail.com
(760)703-3285

Carol, Jeff and the Lightner Family

On behalf of everyone associated with the Turn Around for Veterans (TAV) program I want to extend our heartfelt condolences and thank you for a Tom put into our program. I first met Tom at the Wounded Warrior Battalion West in 2010 as one of the instructors. His commitment to helping veterans work through their injuries and disabilities was an inspiration to everyone associated with TAV. I had the privilege of working very closely with Tom starting in 2019 as we transitioned the Chairmanship from Tom to me. We spent many wonderful hours together driving to the TAV sites so that I understood the inner workings of what it takes to maintain the high level of activity necessary to keep TAV running, and financed, at the challenging level Tom had maintained. Sometimes I thought I was "drinking from a fire hose" but he made sure I knew the main points and he was always willing to provide encouragement and constructive input when necessary. I will always treasure the many good stories we shared. Tom's boisterous love of life, sense of humor and booming voice are missed at all of our meetings and events.

I consider Tom a true friend, mentor and inspiration. I am honored to have known Tom.

May Tom rest in peace and may your family find comfort in his legacy as a very special contributor to the mental health of thousands of Veterans.

Sincerely

Paul Simpson



Member-"Chips"

Happy Holidays and Merry Christmas!

Hello San Diego Woodturners

Our roster this month comes in at **227** members.

Hope all of you are well and you enjoyed the last demo.

I'd like to take a moment to mention that if you haven't already, please consider re-newing (\$50) for next year. You can renew via PAYPAL. Go to our members only tab and to link "Annual renewal using PAYPAL."

If you're already a member, consider also joining AAW, if you think our resources are great, you will no doubt benefit from their pool of knowledge. Check them out at www.woodturner.org

Remember that as a paid member, you have access to the SDWT Members facebook group I hope you decide to join the group, it's a very simple way of interacting with other members of the club.

If you were missing a badge, we finally had received the backlog for those and are being distributed at the in-person meetings (See Motoko for badges). If you are an existing member interested in one of the new wooden badges, the cost will be \$7 per badge and it will include your choice of either magnet or pin attachment. If you need either an extra pin or magnet, those will be \$1.

If you have any questions or you think you might be missing club emails. Let us know either in SDWT Members or membership@sdwt.org

Esther Assemat

Thank you,,

Esther Assemat (Membership Committee Chair)

Questions: Contact me at Membership@sdwt.org



San Diego
Woodturners

A chapter of the American Association of Wood Turners



Membership Form

SDWT membership is \$50.00 per calendar year. To become a member, complete this form and send a check to SDWT. Send to the address below or bring it to any SDWT meeting, go to (www.sdwt.org) for our meeting time and location. If you have any questions, please contact us at (info@sdwt.org)

Date _____

Name _____

Address _____

City _____ State _____ Zip _____

Phone # _____

Email _____

Our membership allows our club to hold monthly meetings, enjoy refreshments, watch expert demonstrations and participate in classes. As a member, you will have access to woodturning supplies, video library, wood resources and mentorship.

Check out our website at www.sdwt.org

San Diego Woodturners
9984 Scripps Ranch Blvd. #198
San Diego, Ca. 92131



Wood Dust Safety and Wood Toxicity

Brian S. Saunders, MD

Ken Roth, MD

We, wood workers and wood turners, don't take wood dust and wood toxicity seriously! Many of us don't think about it at all and don't take steps to reduce our exposure and improve our protective measures. In this two-part article I am reprinting an excellent article written by the late Ken Roth, MD: [Wood Dust and Your Health](#). This article is in the Tips and Techniques section of our Members Only Section of our website.

In part 2 next month, I will expand on wood toxicity and then provide a list of online resources that can help us identify wood species, discuss the toxic potential of wood, and suggest measures that can be taken to minimize risk.

Part 1

WOOD DUST and YOUR HEALTH

Ken Roth, MD

Working with wood produces and exposes you to dust, toxins and allergens, thereby threatening your health. Those of us who work with wood have blindly accepted these risks, but current medical knowledge tells us that the risks are too great to continue to ignore the impact on our health. As we live longer the effects of health hazards are showing their ugly faces in those of us who have insulted our bodies with poor diet, too much alcohol, tobacco, and breathed in harmful substances. This talk will discuss the effect of dust, toxins, and allergens in our lungs and how to minimize the inherent risk of working with wood.

ANATOMY

Unfortunately, we first need some basic understanding of the anatomy involved. Understanding the anatomy of the lung is crucial to your understanding of this subject and what it means to your well-being. The nose and the area behind it (nasopharynx) with its hair and mucus covered surface “strain” out the large particles that are inhaled through the nose. The bronchial “tree”, beginning at the “Adam’s apple” (larynx) consists of the trachea (trunk of the “tree”) and bronchi (the limbs) is responsible for screening and removing smaller inhaled particles. Alveoli, the “leaves”, are balloon-like formations that constitute the actual lung tissue. Covering the lining of the tree or trachea and bronchi are millions of tiny projections called cilia. These cilia are 5 microns in length (micron = 1/25,640 of an inch - the finest human hair is 100 microns) and beat in a wave action 1,000 to 1,500 times per minute, functionally sweeping material from the alveoli up and out of the bronchial tree.

Alveoli are one cell thick, immediately adjacent to its neighboring alveoli, with one-cell thick, blood vessels running between. The blood vessels are just big enough to allow a single blood cell to squeeze through, one at a time (a red blood cell is 8 microns). These “balloons” have a total surface area in a human of 70 square meters or the area of a tennis court.

The lung allows inhaled oxygen to be transferred to the blood and the carbon dioxide in your body to be transferred to the air being exhaled. Without this happening YOU DON’T LIVE!!!! The ability of the lung tissue to transport these gases depends on the thinness of the alveoli, blood vessels and their interface. If that interface is thickened by scarring or edema fluid (swelling from inflammation or heart failure, etc.) oxygen and carbon dioxide cannot be exchanged and you are in respiratory distress or dead.

There are large, roving white cells (macrophages) that ingest dust particles and other foreign bodies and transport them out of the bronchial tree and lungs.

PHYSICAL PROPERTIES OF DUST

As stated above, a micron is 1/25,640 of an inch or 1/1000 of a millimeter. Visual dust is greater than 20 microns, but dangerous dust is less than 10 microns. Most of the dust greater than 5 microns are deposited on the walls of the nasopharynx and trachea and are removed by the cilia and macrophages unless overwhelmed by chronic exposure or by high concentration. Dust particles less than 0.5 microns readily reach the alveoli, though 90 % can be expelled with the exhaled air. Incidentally, cigarette smoke particles are 0.5 microns.

To further confuse you, we need to talk about concentration of dust in the air. If the concentration is small or the exposure not prolonged, the macrophages and cilia can eventually handle the deposited dust. OSHA states that “**the maximum permissible exposure per 8 hours is ½ tsp. in a 24’ x 24’ x 9’ shop**”.

Wood also can contain chemical toxins (Western Redcedar = plicatic acid), allergens (Sequoia redwood), and molds (spalting wood or bark).

PATHOPHYSIOLOGY

A big word that describes what all these things do to us. We can become acutely ill with a pneumonia, respiratory distress, bronchial asthma, or a chronic, respiratory condition such as pneumoconiosis that requires constant oxygen therapy and can lead to an early, miserable death.

The bottom line is that dust particles are foreign bodies, and the body reacts to them by an inflammatory reaction, *AND* the chemicals/toxins/allergens are similarly handled by inflammation. Inflammation produces tissue fluid (edema) and THICKENS the tissue between the alveoli to the point that it is difficult or impossible for the oxygen/carbon dioxide to exchange. This can occur as an acute pneumonia-like process or as a chronic condition. In the chronic condition scarring results, making the changes permanent and the ability to breath difficult or impossible.

Smokers, at this point I need to tell you one reason smoking is bad. Nicotine paralyzes the cilia, thus making it impossible for the trachea and bronchia to clean out the entrapped foreign particles. **One cigarette paralyzes cilia for approximately one hour.** This is why smokers constitute the vast majority of people who die from pneumoconiosis, silicosis, emphysema, bronchiectasis, and COPD to name a few. Smoker’s lungs simply cannot handle the crap that we breath into our lungs on a daily basis – particularly if your work or play environment includes dusts or other breathable irritants.

PROTECTION

We cannot completely eliminate dust and other inhalants, but we must minimize them. This is important for all of us, but particularly if we smoke. How do we minimize exposure?

- Decrease dust production -
Use cutting techniques, minimal scraping
Plane and scrape flat work, with minimal sanding
Use sharp saw blades, router bits, planer blades, etc.
Wet sand when possible.

Dust collection -

Collector system is best.

(Shop vacs do not have adequate filtering capabilities. The motor is not designed for continuous use. There are now filters available for shop vacs to filter 0.3 micron particles.)

Use filter bags on your collection system that will filter small particles. Grizzly has a bag that filters 0.3 microns. Cotton bags (standard) only capture 50 micron sized particles. Knit polyester bags only capture 5.0 micron particles.

Seal leaks in your saws, etc. so that exhaust system can work correctly.

Room Air Filter System -

The smallest particles remain suspended in room air for hours and long after you quit making dust the particles are in your inhaled air. These must be filtered out.

Air filter systems capable of filtering 1 micron, or less sized, particles, while filtering at least 6 room changes per hour are available. Some will filter 35 % of 0.4 micron particles.

Note: There are plans available to make your own, but none emphasize the filter capabilities. Use filters capable of filtering 1 micron or smaller.

If you can open your shop to the outdoors, and can blow dust outside, that is a reasonable alternative to a room air filter.

• Personal Protection –

Throw-away, one strap masks are the least expensive and are NOT effective. They are for **nuisance** dust only. Note: The “Dust Bee Gone” mask featured in the AAW journal, Spring 1999, is only a little better as it will filter 3.0 micron particles.

Disposable mask, 2 rubber straps. Effective if NIOSH approved. Should not be used with a beard.

Cartridge respirator – usually will filter 0.5 micron dust. Must fit well and not be used with a beard. Difficult to wear with a face shield.

The “3 M Power Visor” (formerly Racal) is only a nuisance dust filter. It is NOT a HEPA filter.

Dust Helmet/HEPA filter (Air-Mate 3)- This is the best personal protection as it will filter 0.5 micron. It also has an impact resistant face shield.

Summary –

Working with wood has definite health hazards of dust, toxins, and allergens. Inhaling these substances can lead to devastating lung disease, even death. Minimizing exposure is an absolute must. The process can be expensive but can be made affordable by minimizing the production of dust, evacuating the suspended dust out of the shop by fan, by stopping SMOKING, and the use of a HEPA filter, either in the form of a NIOSH approved dust mask or cartridge filter (if you are not bearded), or better by obtaining a HEPA filter Dust Helmet. If you have the potential to develop pulmonary disease — smokers and career woodworkers- you must protect your lungs or suffer the consequences. A respiratory cripple is one thing I don't want to be.

Remember the invisible dust is the bad stuff, and high concentration and prolonged exposure can overwhelm the system, producing severe problems – **especially in smokers.**

Kenneth Roth, MD



In part 2 next month, Brian will expand on wood toxicity and then provide a list of online resources that can help us identify wood species, discuss the toxic potential of wood, and suggest measures that can be taken to minimize risk.

From the SDWT WEBMASTER

If you are short of time or looking for specific information, be sure to check out the "Timestamps" in the description area of all Zoom meeting videos. They allow you to quickly click and jump to the specific topics.: Plate

You will find all of this on the password required "[Members Only](#)" webpage under "Zoom Recordings" Latest Recordings as follows:

Stuart Batty (Paid Demo-Access Code required)

Don Owen: Plates

Matt Monaco (Paid Demo-Access Code required)

Mike Jackofsky: Hollow Forms

Dave John: Trembleurs

Jeff Neff: Half Bowl

Todd Raines: Oval Box

Tom Edwards/Working with other than Perfect Wood

Sally and Karen/ "Dirty Pour" & Bowl

Emiliano Achaval / Calabash Bowl

Mike Mahoney - Various Turning Topics/Q&A

Michael Dresdner, Wood Finishing for Woodturners

Mark Making with Power, Linda Ferber





As members of the San Diego Woodturners, you may come across an opportunity for us to add to our wood inventory and made available to our membership at nominal cost.

If you hear of anyone needing to move wood off their property please give me a call **Chad LaVoi** (see members only tab (membership directory for contact info or send an email to GotWood@sdwt.org) .



From: Wood Resources Team

Wishing you all the Best

Happy Holidays and Merry Christmas! Chad.

Turned a few Weed Pots? Pls bring them to the Christmas Party. We will use them as Center Pieces on the tables.

Raffle



There will be no raffle in December. I look forward to January when we kick-off a new year with some great raffle items. As we bring the year to a close, a Big **Thank You** to all the members who participate in the monthly raffle. The raffle program is self-supporting with your support and ALL of the proceeds from the raffle are reinvested in future raffles and never used for any other purpose.

If you would like to see some particular item(s) included in the raffle program, let me know and I will see if I can work them in.

Lastly, **Happy Holidays and Merry Christmas**. Be safe and I look forward to 2023 and another banner year with SDWT.

Jeff - Raffle Committee Chair.

From the DVD & Book Library

Hi All

Check-In only at the December gathering. Check out the listing on the SDWT web page of our vast DVD and Book library on various woodturning topics, techniques, and artistry. DVDs and Books will be available at our January meeting for checkout.

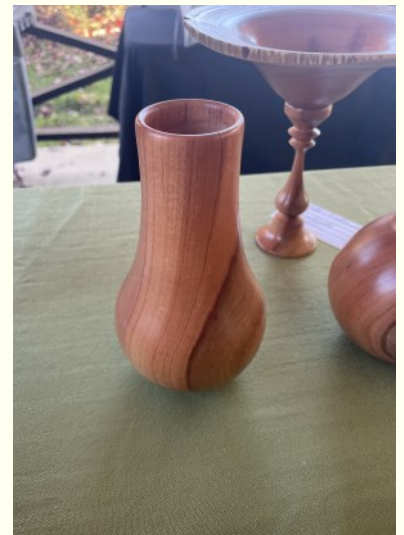
Until then,

Happy Holidays and Merry Christmas!



Carolyn Be Safe.

November Instant Gallery Turnings



November Instant Gallery Turnings



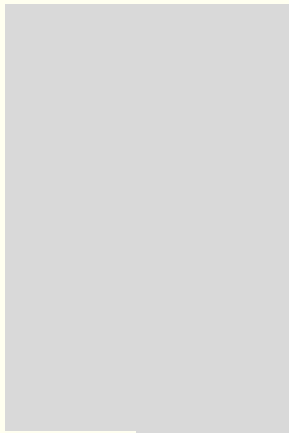
November Instant Gallery Turnings



November Instant Gallery Turnings



November Instant Gallery Turnings



Resources

Tropical Exotic Hardwoods

2270 Camino Vida Roble site "B"
Carlsbad, CA 92008 (760-434-3030)

North County Tools

955-A Rancheros Drive
San Marcos, CA 92069 (760-743-2004)

Enviro-Safety Products (No discount)

516 E. Modoc Ave.
Visalia, CA 93292—7630
(800) 637-6606

Rockler

8199 Claremont Mesa Blvd
San Diego, CA 92111 (858 268-1005)

The Hardwood & Hardware Co

8849 Complex Dr
San Diego, CA 92126
(858 - 536-1800)

Woodworker West

PO Box 452058
Los Angeles, CA 90045
(310) 216 - 9265

Tool Depot

3464 Pickett St
San Diego, CA (619) 220 - 7111
1655 Broadway #13
Chula Vista, CA (619) 585-800

SD Urban Timber

922 Industrial Blvd
Chula Vista, CA 91911
619-20 7-4084 (sdurbantimber.com)

American Furniture Design

Ben MatteTung Oil can be purchased here

2243 Mountain View Dr.
Escondido, CA
(760) 743-6923

Bennett Crone Lumber and Ply-wood, Inc.

1202 Piper Ranch Rd
San Diego, CA 92154
619-661-0667
(Bennetcrone.com)



Pete Campbell is still collecting Weed Pots (WP). As shown in the picture left, our recent groupment of WP going to Lumbercycle (501 (3) ©). Tom Hamilton has been very appreciative of our continued support and he extends a big **Thank You** to all that have contributed.

Keep those WP's coming. We will be displaying them on the dining tables at the Christmas Party.

AAW Virtual Demonstration's

AAW posts on their website for members (www.woodturner.org) via the "Watch Live Demonstrations Online: via **AAW's remote demonstration (IRD's) event calendar Tab**: Here's a listing for quick reference of the forthcoming Line-up: (Fee typically required and sign-up required):

AAW Virtual Events: (Registration Required)

Rebeca DeGroot, Sat, December 17th, 2022

Continue to check the AAW site "Virtual Remote Events Tab" for updates on, IRD's

Other sites to check-out:

- Virtual Woodturning Demo's with Trent Bosch. Ck his site at virtualwoodturningdemos.com
- Cindy Drozda has various IRD's. Ck her site at cindydrozda.com

-San Diego Fine Woodworkers (SDFWA.org) provides various on-line demo's. Ck them out as well as view other items that may be of interest

- CRAFTSUPPLYUSA.com continues the beginning woodturning series by Kirk Deheer. Go to craftsupplyusa.com and tap on the "woodturning 101 video series". Other demo's to see as well on the website Most recent video (#9) is turning a **Goblet**.



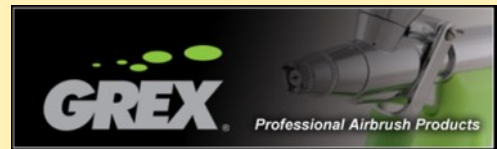
**2023 AAW Symposium in
Louisville, KY. June 1-4, 2023**



11717 Caminito Vantana • San Diego, CA 92131
858-395-0562 • airbrushingwood.com

Joe carries the full line of Grex Professional airbrush products including:

Airbrushes - Tritium pistol grip and Genesis XGi pencil grip
Compressors
Accessories
Private Stock acrylic paint



Joe carries all Grex Air Tools, featuring:

AOS 368 Random Orbital Sander
AG 368 Angle Grinder and Carving Tool



Learn more about the above products and see Joe's Gallery at Airbrushingwood.com. (highly recommended) along with his educational material on color/airbrushing and much more.
Good Stuff!!

All club members will receive show discounting pricing on all products and an extra 5% on airbrush starter kits.



The San Diego Rockler Store,
is offering the San Diego Woodturners this exclusive discount coupon.
Valid only at the San Diego location on Claremont Mesa Blvd, this coupon gives
each SDWT member 20% off one item (with exclusions as noted).

The coupon (shown below) is valid for one use only per members HOUSEHOLD and
the member must show their current SDWT membership card.

**** 20% OFF ****

ONE ITEM

SAN DIEGO WOODTURNER Member



Coupon Required for Discount, No Exceptions

EXPIRES 12/11/2022

Coupon may be used ONCE! Does not apply to previous purchases. Power tools excluded. Sale items excluded. Discounts may not be combined. Discount Restricted Items Excluded. Sale prices can not be adjusted to use coupon. (Showing current year SDWT Membership Card required). When in doubt, ask (Ben-New Manager).

*******Coupon WILL NOT be Honored past the Expiration date*******

*******ONE COUPON PER MEMBER HOUSEHOLD ONLY*******

Mentoring Program

Our mentoring program is one of the unique benefits of our club. Our mentors can help with basic to complex turning and teach safety along the way. This is a great way to start out or hone your skills with complex tasks taught by turners skilled in specific areas of turning. Our mentors are volunteers and are dedicated to sharing information on all facets of woodturning.

Rest assured however, that all of our mentors are easy to work with. Most often the mentor opens his/her shop to the applicant at a mutually agreed upon time and schedule.

A list of mentors and their specialties are listed within our Mentor Tab of our SDWT.org website (**go to About tab and pull down menu, go then to Mentors**). Phone numbers for the Mentor you have particular area of interest is listed in the (members only area of the web site).. Upon making contact, arrange a time and place. If you have any questions, email me at the below address..



Jeff Neff – Mentor Committee Chairman (MentorChairman@sdwt.org)

“Mentors do not give you a shortcut, but they streamline the process. They invariably had their own great mentors, giving them a richer and deeper knowledge of their field. Their ensuing years of experience taught them invaluable lessons and strategies for learning. Their knowledge and experience becomes yours; they can direct you from unnecessary side paths or errors. They observe you at work and provide real-time feedback, making your practice more time efficient. Their advice is tailored to your circumstances and your needs. Working closely with them, you absorb the essence of their creative spirit, which you can now adapt in your own way.” From the Book - ***Mastery*** by Robert Greene



2022 SDWT Board Members and Committees

SDWT BOARD MEMBERS

President

Dave John pres@sdwt.org

Vice President

Sally Ault vp@sdwt.org

Secretary

Don Wolfe secretary@sdwt.org

Treasurer

Geri Gabriel treasurer@sdwt.org

Members at Large

Paul Simpson, Jeff Neff

Chad LaVoi, Terry Sullivan

Jon Chernow, Roy Ulrich

Ernesto Aquino, Andy Boyer

Steve Frick, Carolyn Jones

Motoko Smith

Contact Information for Club Officers, Board and Committee members is available on the SDWT.org website within the Members Only Area. (Membership Directory) and above email addresses.



COMMITTEES

Newsletter

Dave John NewsletterEditor@sdwt.org

Audio/Visual

Andy Boyer, Hal Gorss, Jerry Aarestad

Raffle/Mentors

Jeff Neff MentorChairman@sdwt.org

Del Mar Fair

Steve Frick, Jon Chernow

Programs/Classes

Sally Ault ProgramChair@sdwt.org

Membership

Esther Assesmat membership@sdwt.org

Wood Resources

Chad LaVoi (GotWood@sdwt.org),

Refreshments

Steve Frick

Instant Gallery

Ernesto Aquino

Host Facility

Terry Sullivan

TAV

Paul Simpson TAVChair@sdwt.org

Site Leads: NMC: Howard Katz, Aspire Brian Saunders

WWBN CPEN: Jon Chernow / Dan Lyle

Sunshine Committee

Mavis Porter

Webmaster

Roy Ulrich webmaster@sdwt.org

By Laws

Don Wolfe, Jon Chernow

AAW Liaison

Chad LoVoi

The Last Page - "Cutoffs"

(Odds and Ends)



From the SDWT Board & Committee's Member's and Mentor 's...

Here's wishing you all a Merry Christmas and Happy New Year.

It has been a fantastic and busy year with SDWT and we Thank You for making it Great!

Have a Safe Holiday Season.



NOTTINGHAM ACCESS

For access to the Nottingham Arts Center contact Terry Sullivan via e-mail (go2tms2@gmail.com). A voice message may additionally be left at the number listed in the member directory. Include the day and time you wish to arrive as well as the purpose of your visit. You must have approval from Terry or his representative for access to the facility.

Do not enter the Nottingham facility or grounds without prior approval or without the project leader present.

San Diego Woodturners (SDWT)

A Nonprofit Corporation

A Chapter of the AAW

9984 Scripps Ranch Blvd #198

San Diego, CA 92131



25 December, 2022

Next Event

December 10th, 2022

Annual SDWT

Holiday/Christmas Party

10 AM until 2 PM

Nottingham Arts Center, San Marcos